

APOER2 RABBIT MAB

货号: N261859

产品全名: ApoER2 兔单克隆抗体

基因符号 LRP8; APOER2; Low-density lipoprotein receptor-related protein 8; LRP-8; Apolipoprotein E receptor 2

UNIPROT ID: Q14114

背景: Cell surface receptor for Reelin (RELN) and apolipoprotein E (apoE)-containing ligands. LRP8 participates in transmitting the extracellular Reelin signal to intracellular signaling processes, by binding to DAB1 on its cytoplasmic tail.

抗原: A synthetic peptide of human ApoER2

经过测试的应用: WB,IP

推荐稀释比: WB: 1/500-1/1000 IP: 1/20

种属反应性: Rabbit

克隆性: Rabbit Monoclonal

克隆编号: R03-1H8

分子量: Calculated MW: 106 kDa; Observed MW: 130,106 kDa

亚型: IgG

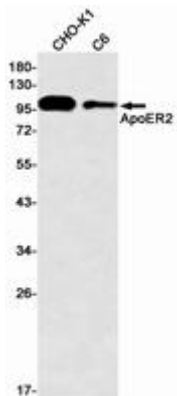
纯化: Affinity Purified

种属反应性: Human,Rat,Hamster

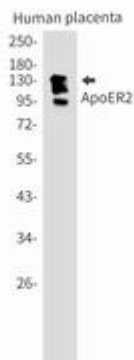
成分: PBS (without Mg²⁺ and Ca²⁺), pH 7.3 containing 50% glycerol, 0.5% BSA and 0.02% sodium azide

研究领域: Neuroscience

储存和运输: Store at -20°C. Avoid repeated freezing and thawing



Western blot analysis of ApoER2 in CHO-K1, C6 lysates using ApoER2 antibody.



Western blot analysis of ApoER2 in Human placenta lysates using ApoER2 antibody.