

## APOBEC1 RABBIT PAB

货号: S214072

产品全名: APOBEC1 兔多抗

基因符号: BEDP; HEPR; CDARI; APOBEC-1

**UNIPROT ID:** P41238 (Gene Accession - NP\_001635 )

**背景:** This gene encodes a member of the cytidine deaminase enzyme family. The encoded protein forms a multiple-protein editing holoenzyme with APOBEC1 complementation factor (ACF) and APOBEC1 stimulating protein (ASP). This holoenzyme is involved in the editing of C-to-U nucleotide bases in apolipoprotein B and neurofibromatosis-1 mRNAs. Multiple transcript variants encoding different isoforms have been found for this gene.

**抗原:** Synthetic peptide of human APOBEC1

**经过测试的应用:** ELISA, IHC

**推荐稀释比:** IHC: 25-100; ELISA: 5000-10000

**种属反应性:** Rabbit

**克隆性:** Rabbit Polyclonal

**亚型:** Immunogen-specific rabbit IgG

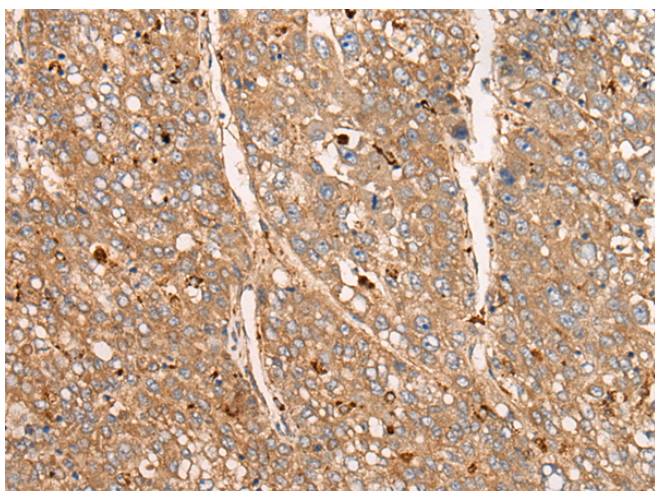
**纯化:** Antigen affinity purification

**种属反应性:** Human

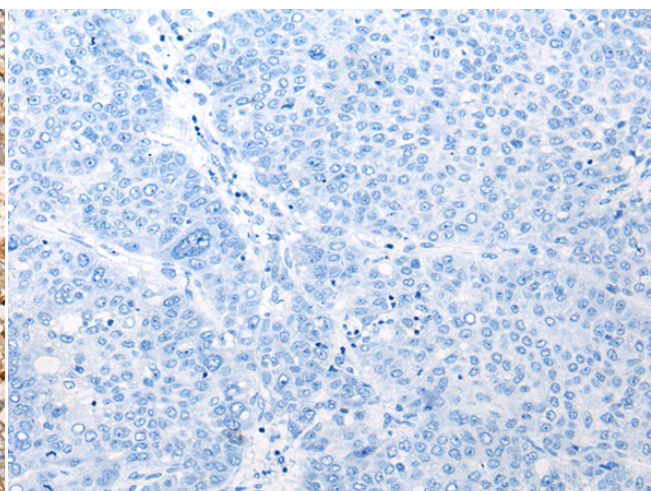
**成分:** PBS (without Mg<sup>2+</sup> and Ca<sup>2+</sup>), pH 7.4, 150 mM NaCl, 0.05% Sodium Azide and 40% glycerol

**研究领域:** Epigenetics and Nuclear Signaling

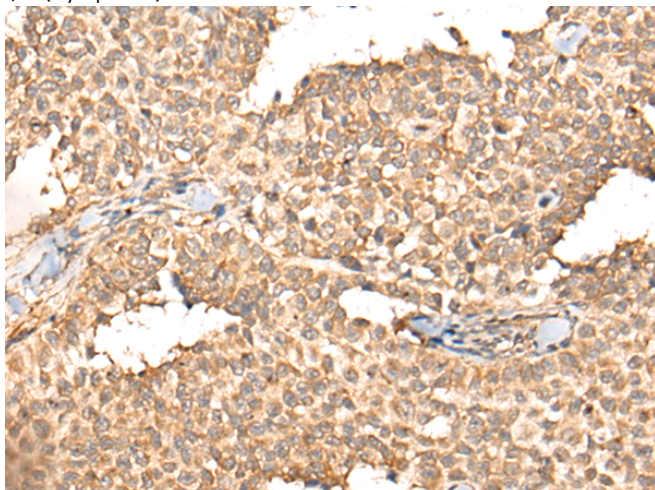
**储存和运输:** Store at -20°C. Avoid repeated freezing and thawing



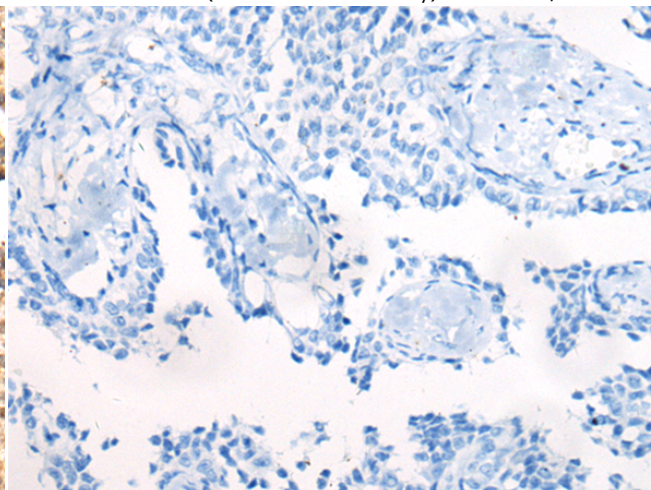
Immunohistochemistry analysis of paraffin embedded Human liver cancer tissue using 214072(APOBEC1 Antibody) at a dilution of 1/25(Cytoplasm).



In comparison with the IHC on the left, the same paraffin-embedded Human liver cancer tissue is first treated with the synthetic peptide and then with 214072(Anti-APOBEC1 Antibody) at dilution 1/25.



The image on the left is immunohistochemistry of paraffin-embedded Human ovarian cancer tissue using 214072(Anti-APOBEC1 Antibody) at a dilution of 1/25.



In comparison with the IHC on the left, the same paraffin-embedded Human ovarian cancer tissue is first treated with synthetic peptide and then with D161293(Anti-APOBEC1 Antibody) at dilution 1/25.



# Product Description

Pioneering GTPase and Oncogene Product Development since 2010

---