

## APLN RABBIT PAB

货号: S221166

产品全名: APLN 兔多抗

基因符号: APEL; XNPEP2

**UNIPROT ID:** Q9ULZ1 (Gene Accession - NP\_059109)

**背景:** This gene encodes a peptide that functions as an endogenous ligand for the G-protein coupled apelin receptor. The encoded preproprotein is proteolytically processed into biologically active C-terminal peptide fragments. These peptide fragments activate different tissue specific signaling pathways that regulate diverse biological functions including fluid homeostasis, cardiovascular function and insulin secretion. This protein also functions as a coreceptor for the human immunodeficiency virus 1.

**抗原:** Synthetic peptide of human APLN

**经过测试的应用:** ELISA, IHC

**推荐稀释比:** IHC: 50-200; ELISA: 5000-10000

**种属反应性:** Rabbit

**克隆性:** Rabbit Polyclonal

**亚型:** Immunogen-specific rabbit IgG

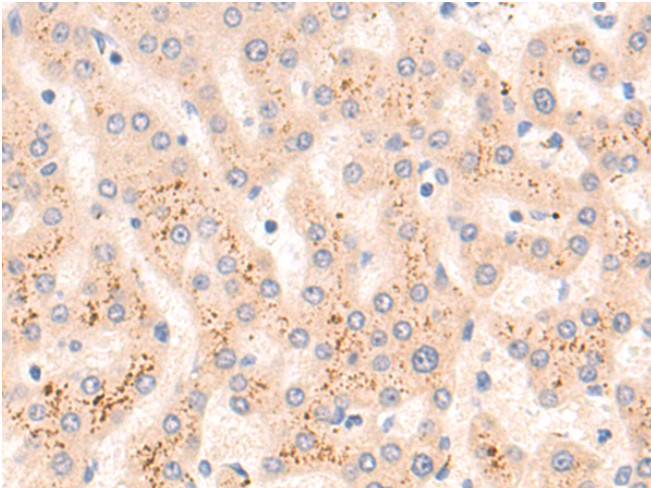
**纯化:** Antigen affinity purification

**种属反应性:** Human, Mouse, Rat

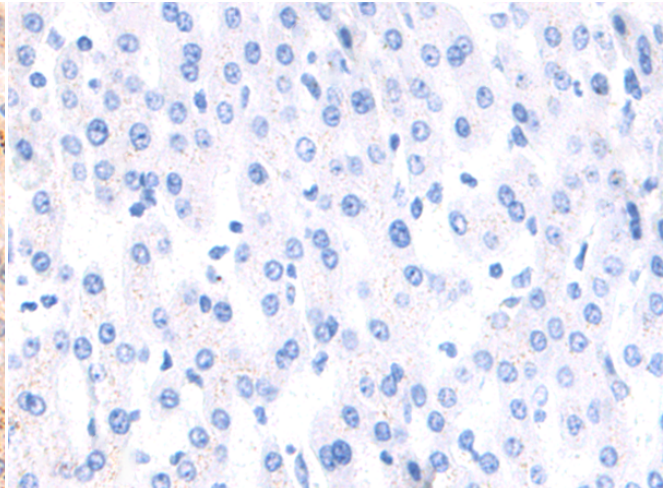
**成分:** PBS (without Mg<sup>2+</sup> and Ca<sup>2+</sup>), pH 7.4, 150 mM NaCl, 0.05% Sodium Azide and 40% glycerol

**研究领域:** Signal Transduction, Metabolism, Neuroscience, Cardiovascular

**储存和运输:** Store at -20°C. Avoid repeated freezing and thawing



Immunohistochemistry analysis of paraffin embedded Human liver cancer tissue using 221166 (APLN Antibody) at a dilution of 1/50 (Secreted).



In comparison with the IHC on the left, the same paraffin-embedded Human liver cancer tissue is first treated with the synthetic peptide and then with 221166 (Anti-APLN Antibody) at dilution 1/50.