

APG5L RABBIT MAB

货号: N261857

产品全名: APG5L 兔单克隆抗体

基因符号 APG 5L; APG5; APG5 autophagy 5 like; APG5 like; APG5-like; Apoptosis specific protein; ASP; ATG 5; ATG5 autophagy related 5 homolog; Autophagy protein 5; hAPG5

UNIPROT ID: Q9HIY0

背景: Required for autophagy. Conjugates to ATG12 and associates with isolation membrane to form cup-shaped isolation membrane and autophagosome. Involved in mitochondrial quality control after oxidative damage, and in subsequent cellular longevity.

抗原: A synthetic peptide of human APG5L/ATG5

经过测试的应用: WB, ICC/IF, IP

推荐稀释比: WB: 1/500-1/1000 IF: 1/50-1/200 IP: 1/20

种属反应性: Rabbit

克隆性: Rabbit Monoclonal

克隆编号: R05-4F2

分子量: Calculated MW: 32 kDa; Observed MW: 55 kDa

亚型: IgG

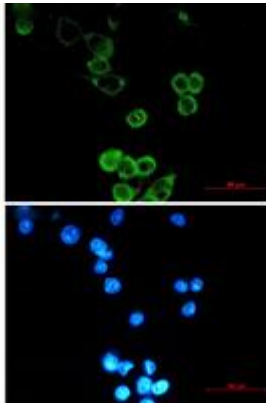
纯化: Affinity Purified

种属反应性: Human, Mouse and Rat

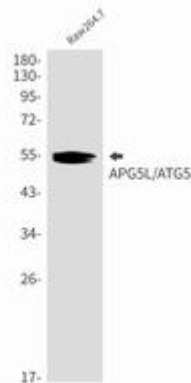
成分: PBS (without Mg²⁺ and Ca²⁺), pH 7.3 containing 50% glycerol, 0.5% BSA and 0.02% sodium azide

研究领域: Cell Biology

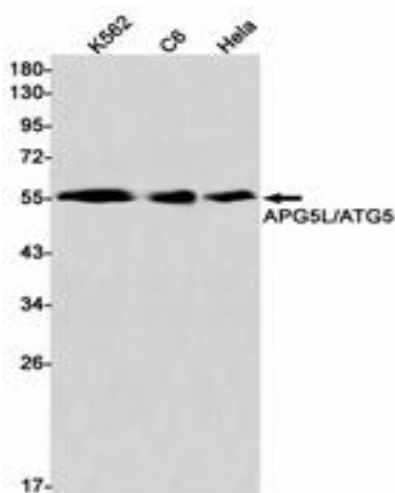
储存和运输: Store at -20°C. Avoid repeated freezing and thawing



Immunocytochemistry analysis of APG5L/ATG5 (green) in MCF-7 using APG5L/ATG5 antibody, and DAPI (blue)



Western blot analysis of APG5L/ATG5 in Raw264.7 lysates using APG5L antibody.



Western blot analysis of APG5L/ATG5 Rabbit pA in K562, C6, HeLa lysates using APG5L/ATG5 antibody.