

## APG5L (3C10) MOUSE MAB

货号: N261354

产品全名: APG5L (3C10) 小鼠单抗

基因符号 APG 5L; APG5; APG5 autophagy 5 like; APG5 like; APG5-like; Apoptosis specific protein; ASP; ATG 5; ATG5 autophagy related 5 homolog; Autophagy protein 5; hAPG5

**UNIPROT ID:** Q9HIY0

背景: Required for autophagy. Conjugates to ATG12 and associates with isolation membrane to form cup-shaped isolation membrane and autophagosome. Involved in mitochondrial quality control after oxidative damage, and in subsequent cellular longevity.

抗原: Purified recombinant protein expressed in E.coli.

经过测试的应用: WB,IHC-P

推荐稀释比: WB: 1/500-1/1000 IHC: 1/50-1/100

种属反应性: Mouse

克隆性: Mouse Monoclonal

克隆编号: 3C10-5C8-8C3

分子量: Calculated MW: 32 kDa; Observed MW: 55 kDa

亚型: IgG1

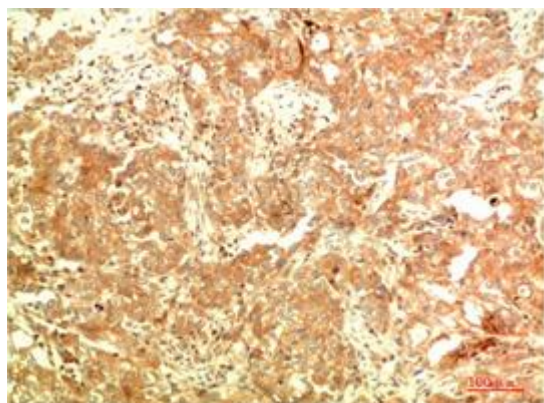
纯化: Affinity Purified

种属反应性: Human,Rat,Mouse

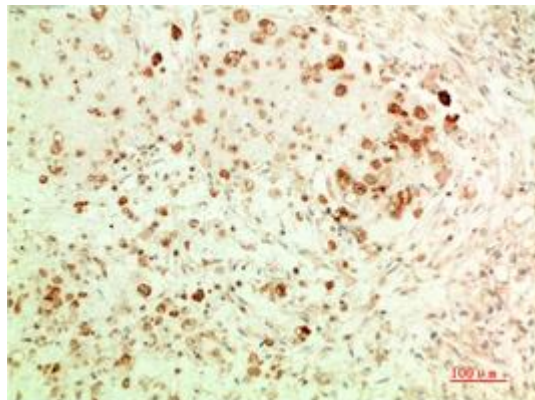
成分: PBS (without Mg<sup>2+</sup> and Ca<sup>2+</sup>), pH 7.3 containing 50% glycerol, 0.5% BSA and 0.02% sodium azide

研究领域: Cell Biology

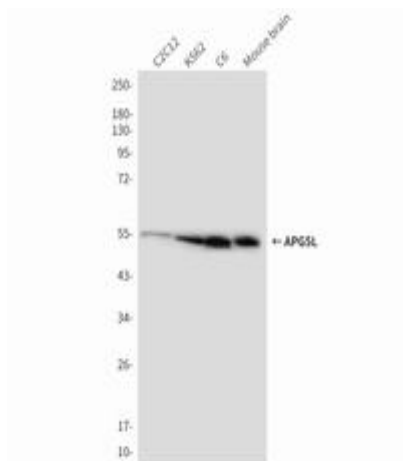
储存和运输: Store at -20°C. Avoid repeated freezing and thawing



Immunohistochemical analysis of paraffin-embedded Human tonsils using APG5L (3C10) antibody. High-pressure and temperature Sodium Citrate pH 6.0 was used for antigen retrieval.



Immunohistochemistry analysis of paraffin-embedded Human Ovarian Carcinoma Tissue using APG5L (3C10) antibody. High-pressure and temperature Sodium Citrate pH 6.0 was used for antigen retrieval.



Western blot analysis of APG5L (3C10) in C2C12, K562, C6, mouse brain lysates using APG5L (3C10) antibody