

APELIN RABBIT PAB

货号: N225029

产品全名: Apelin 兔多抗

基因符号 APLN; APEL; Apelin; APJ endogenous ligand

UNIPROT ID: Q9ULZ1

背景: Endogenous ligand for the apelin receptor (APLNR).

抗原: The antiserum was produced against synthesized peptide derived from the C-terminal region of human APLN. AA range:28-77

经过测试的应用: ELISA,IHC-P

推荐稀释比: IHC: 1/50-1/100 ELISA: 1/10000

种属反应性: Rabbit

克隆性: Rabbit Polyclonal

分子量: -

亚型: IgG

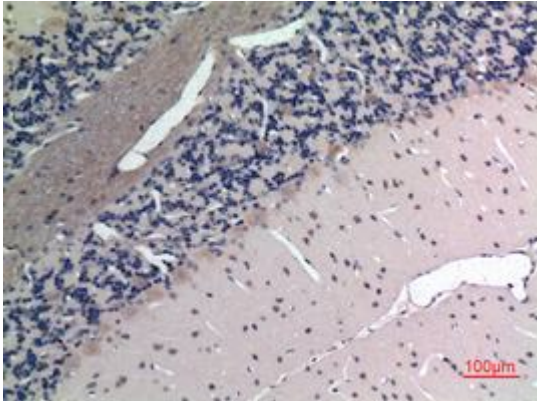
纯化: Affinity Purified

种属反应性: Human, Mouse and Rat

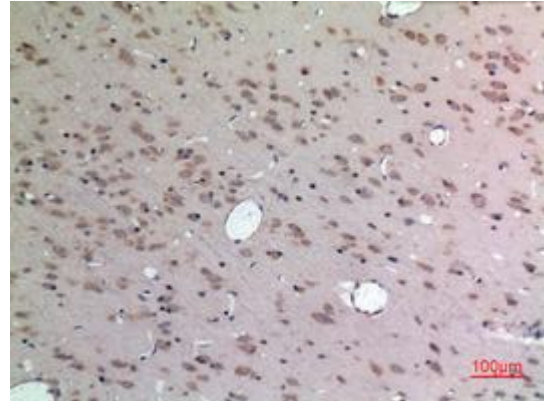
成分: PBS (without Mg²⁺ and Ca²⁺), pH 7.3 containing 50% glycerol, 0.5% BSA and 0.02% sodium azide

研究领域: Neuroscience

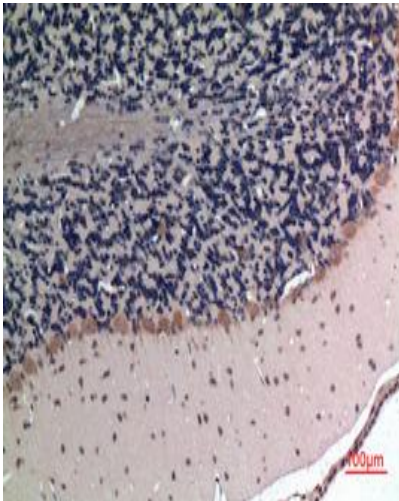
储存和运输: Store at -20°C. Avoid repeated freezing and thawing



Immunohistochemical analysis of paraffin-embedded Human tonsils using Apelin antibody. High-pressure and temperature Sodium Citrate pH 6.0 was used for antigen retrieval.



Immunohistochemistry analysis of paraffin-embedded rat brain using Apelin antibody. High-pressure and temperature Sodium Citrate pH 6.0 was used for antigen retrieval.



Immunohistochemistry analysis of paraffin-embedded rat brain using Apelin antibody. High-pressure and temperature Sodium Citrate pH 6.0 was used for antigen retrieval.