

## APE1 RABBIT MAB

货号: N261855

产品全名: APE1 兔单克隆抗体

基因符号 APEX1; APE; APE1; APEX; APX; HAP1; REF1; DNA-(apurinic or apyrimidinic site) lyase; APEX nuclease; APEN; Apurinic-apyrimidinic endonuclease 1; AP endonuclease 1; APE-1; REF-1; Redox factor-1

**UNIPROT ID:** P27695

**背景:** Ape1 initiates the repair of abasic sites and is essential for the base excision repair (BER) pathway. Repair activities of Ape1 are stimulated by interaction with XRCC1, another essential protein in BER. Ape1 functions as a redox factor that maintains transcription factors in an active, reduced state but can also function in a redox-independent manner as a transcriptional cofactor to control different cellular fates such as apoptosis, proliferation and differentiation.

**抗原:** Recombinant protein of human APE1

**经过测试的应用:** WB,IHC-F,IHC-P,ICC/IF

**推荐稀释比:** WB: 1/500-1/1000 IHC: 1/50-1/100 IF: 1/50-1/200

**种属反应性:** Rabbit

**克隆性:** Rabbit Monoclonal

**克隆编号:** R01-6G2

**分子量:** Calculated MW: 36 kDa; Observed MW: 36 kDa

**亚型:** IgG

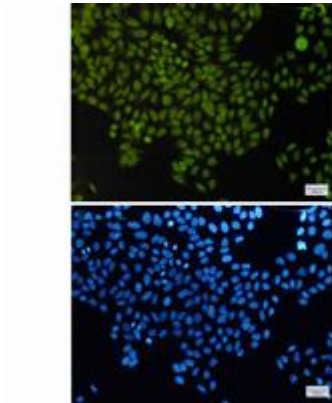
**纯化:** Affinity Purified

**种属反应性:** Human, Mouse and Rat

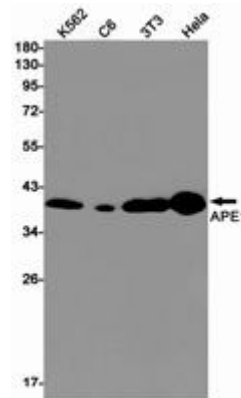
**成分:** PBS (without Mg<sup>2+</sup> and Ca<sup>2+</sup>), pH 7.3 containing 50% glycerol, 0.5% BSA and 0.02% sodium azide

**研究领域:** Epigenetics and Nuclear Signaling

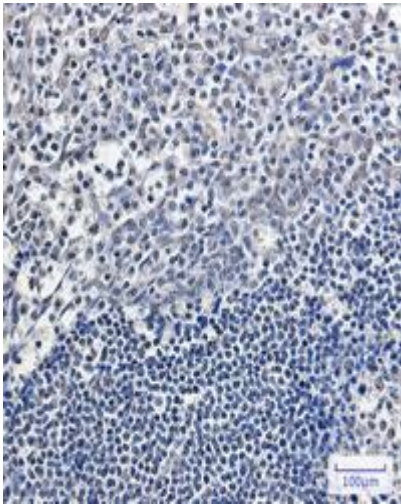
**储存和运输:** Store at -20°C. Avoid repeated freezing and thawing



Immunocytochemistry analysis of APE1 (green) in HeLa using APE1 antibody, and DAPI (blue)



Western blot analysis of APE1 in K562, C6, 3T3, HeLa lysates using APE1 antibody.



Immunohistochemistry analysis of paraffin-embedded Human tonsil using APE1 antibody. High-pressure and temperature Sodium Citrate pH 6.0 was used for antigen retrieval.