

APCDD1 RABBIT PAB

货号: S221258

产品全名: APCDD1 兔多抗

基因符号: HHS; HTS; B7323; HYPT1; DRAPC1; FP7019

UNIPROT ID: Q8J025 (Gene Accession - NP_694545)

背景: This locus encodes an inhibitor of the Wnt signaling pathway. Mutations at this locus have been associated with hereditary hypotrichosis simplex. Increased expression of this gene may also be associated with colorectal carcinogenesis.

抗原: Synthetic peptide of human APCDD1

经过测试的应用: ELISA, IHC

推荐稀释比: IHC: 20-100; ELISA: 2000-5000

种属反应性: Rabbit

克隆性: Rabbit Polyclonal

亚型: Immunogen-specific rabbit IgG

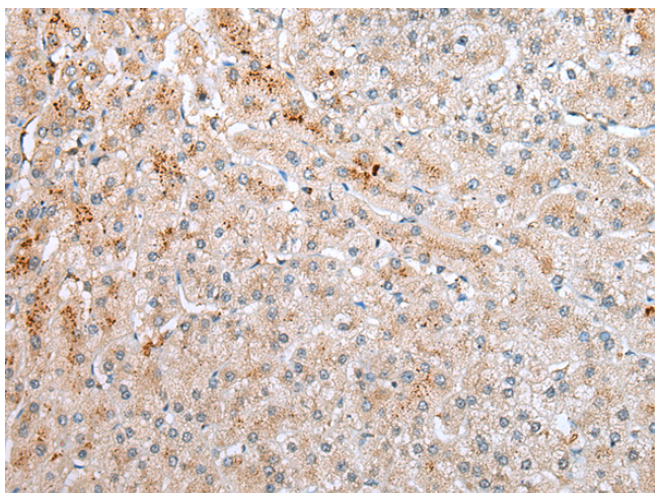
纯化: Antigen affinity purification

种属反应性: Human

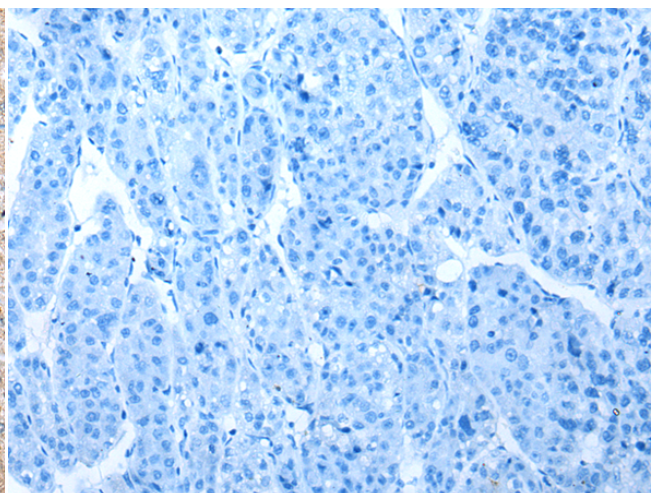
成分: PBS (without Mg²⁺ and Ca²⁺), pH 7.4, 150 mM NaCl, 0.05% Sodium Azide and 40% glycerol

研究领域: Signal Transduction

储存和运输: Store at -20°C. Avoid repeated freezing and thawing



Immunohistochemistry analysis of paraffin embedded Human liver cancer tissue using 221258 (APCDD1 Antibody) at a dilution of 1/20 (Cytoplasm).



In comparison with the IHC on the left, the same paraffin-embedded Human liver cancer tissue is first treated with the synthetic peptide and then with 221258 (Anti-APCDD1 Antibody) at dilution 1/20.