

AP3B1 RABBIT PAB

货号: S219411

产品全名: AP3B1 兔多抗

基因符号 PE; HPS; HPS2; ADTB3; ADTB3A

UNIPROT ID: O00203 (Gene Accession - BC038444)

背景: This gene encodes a protein that may play a role in organelle biogenesis associated with melanosomes, platelet dense granules, and lysosomes. The encoded protein is part of the heterotetrameric AP-3 protein complex which interacts with the scaffolding protein clathrin. Mutations in this gene are associated with Hermansky-Pudlak syndrome type 2. Two transcript variants encoding different isoforms have been found for this gene.

抗原: Fusion protein of human AP3B1

经过测试的应用: ELISA, IHC

推荐稀释比: IHC: 200-300; ELISA: 5000-10000

种属反应性: Rabbit

克隆性: Rabbit Polyclonal

亚型: Immunogen-specific rabbit IgG

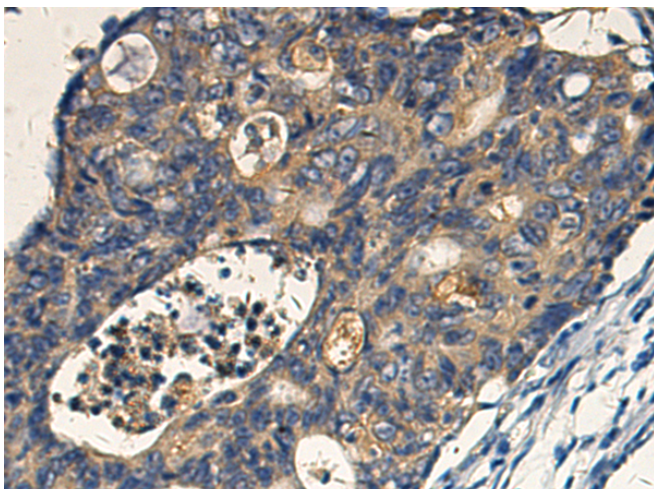
纯化: Antigen affinity purification

种属反应性: Human, Mouse, Rat

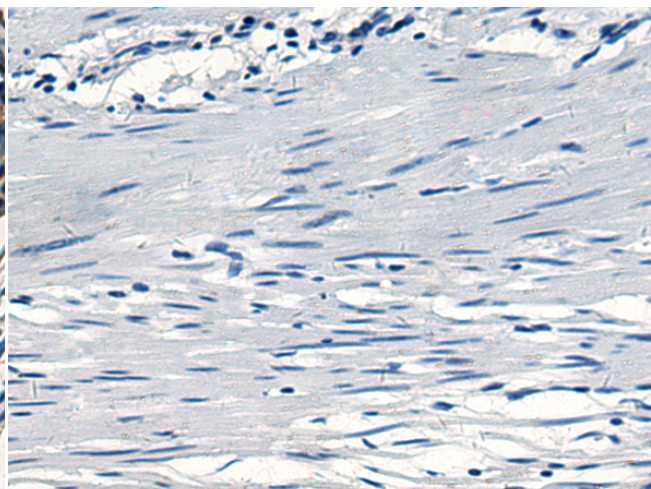
成分: PBS (without Mg²⁺ and Ca²⁺), pH 7.4, 150 mM NaCl, 0.05% Sodium Azide and 40% glycerol

研究领域: Signal Transduction

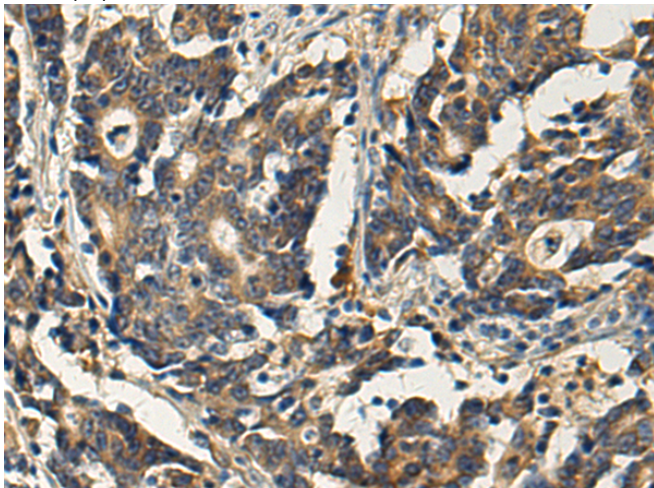
储存和运输: Store at -20°C. Avoid repeated freezing and thawing



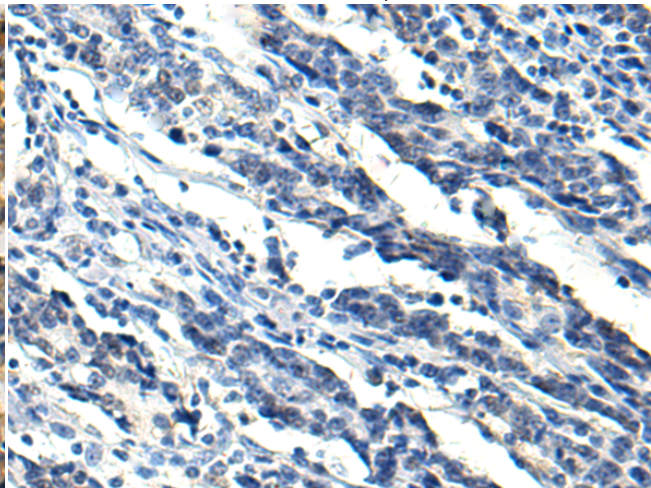
Immunohistochemistry analysis of paraffin embedded Human colorectal cancer tissue using 219411(AP3B1 Antibody) at a dilution of 1/190(Cytoplasm).



In comparison with the IHC on the left, the same paraffin-embedded Human colorectal cancer tissue is first treated with the fusion protein and then with 219411(Anti-AP3B1 Antibody) at dilution 1/190.



The image on the left is immunohistochemistry of paraffin-embedded Human gastric cancer tissue using 219411(Anti-AP3B1 Antibody) at a dilution of 1/190.



In comparison with the IHC on the left, the same paraffin-embedded Human gastric cancer tissue is first treated with fusion protein and then with D226813(Anti-AP3B1 Antibody) at dilution 1/190.



Product Description

Pioneering GTPase and Oncogene Product Development since 2010
