

AP1S1 RABBIT PAB

货号: S212504

产品全名: AP1S1 兔多抗

基因符号 AP19; EKV3; CLAPSI; MEDNIK; SIGMA1A

UNIPROT ID: P61966 (Gene Accession - BC003561)

背景: The protein encoded by this gene is part of the clathrin coat assembly complex which links clathrin to receptors in coated vesicles. These vesicles are involved in endocytosis and Golgi processing. This protein, as well as beta-prime-adaptin, gamma-adaptin, and the medium (μ) chain AP47, form the AP-1 assembly protein complex located at the Golgi vesicle.

抗原: Fusion protein of human AP1S1

经过测试的应用: ELISA, IHC

推荐稀释比: IHC: 50-300; ELISA: 5000-10000

种属反应性: Rabbit

克隆性: Rabbit Polyclonal

亚型: Immunogen-specific rabbit IgG

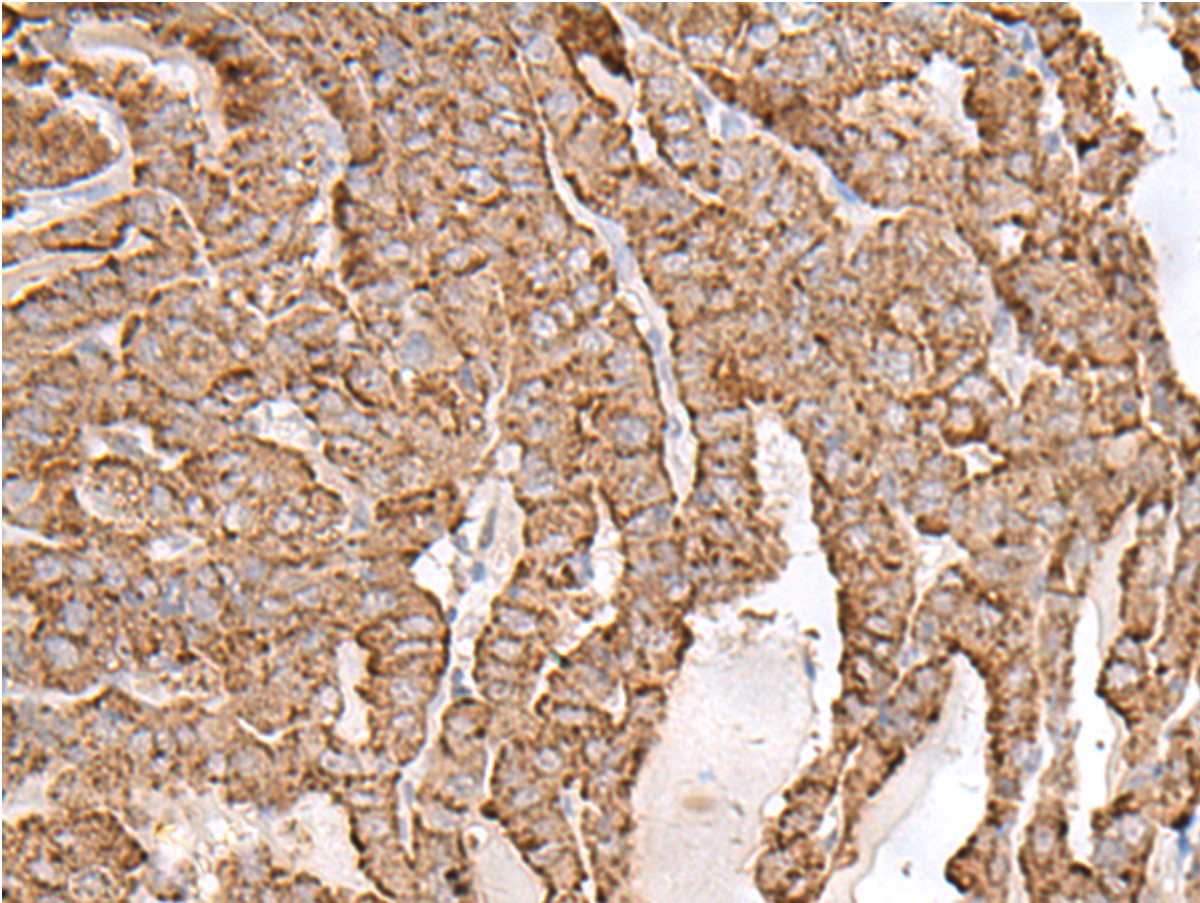
纯化: Antigen affinity purification

种属反应性: Human, Mouse

成分: PBS (without Mg^{2+} and Ca^{2+}), pH 7.4, 150 mM NaCl, 0.05% Sodium Azide and 40% glycerol

研究领域: Signal Transduction

储存和运输: Store at $-20^{\circ}C$. Avoid repeated freezing and thawing



Immunohistochemistry analysis of paraffin-embedded Human thyroid cancer tissue using 212504(AP1S1 Antibody) at a dilution of 1/65(Cytoplasm).