

AP1B1 RABBIT PAB

货号: S220295

产品全名: AP1B1 兔多抗

基因符号: ADTB1; BAM22; API05A; CLAPB2

UNIPROT ID: Q10567 (Gene Accession - NP_001118)

背景: Adaptor protein complex 1 is found at the cytoplasmic face of coated vesicles located at the Golgi complex, where it mediates both the recruitment of clathrin to the membrane and the recognition of sorting signals within the cytosolic tails of transmembrane receptors. This complex is a heterotetramer composed of two large, one medium, and one small adaptin subunit. The protein encoded by this gene serves as one of the large subunits of this complex and is a member of the adaptin protein family. This gene is a candidate meningioma gene. Alternative splicing results in multiple transcript variants.

抗原: Synthetic peptide of human AP1B1

经过测试的应用: ELISA, IHC

推荐稀释比: IHC: 50-200; ELISA: 2000-5000

种属反应性: Rabbit

克隆性: Rabbit Polyclonal

亚型: Immunogen-specific rabbit IgG

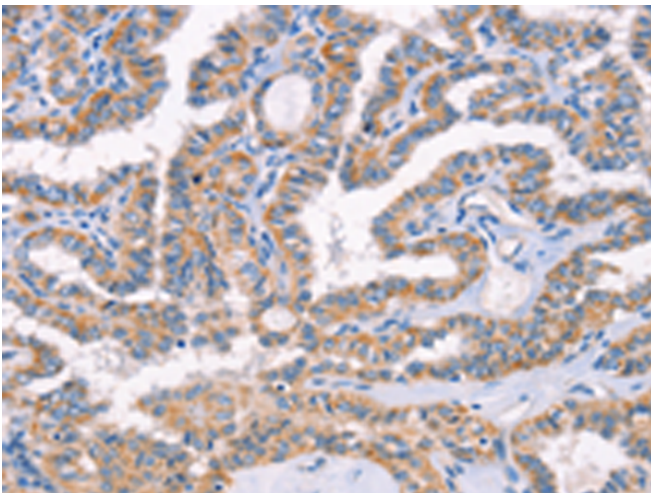
纯化: Antigen affinity purification

种属反应性: Human, Mouse, Rat

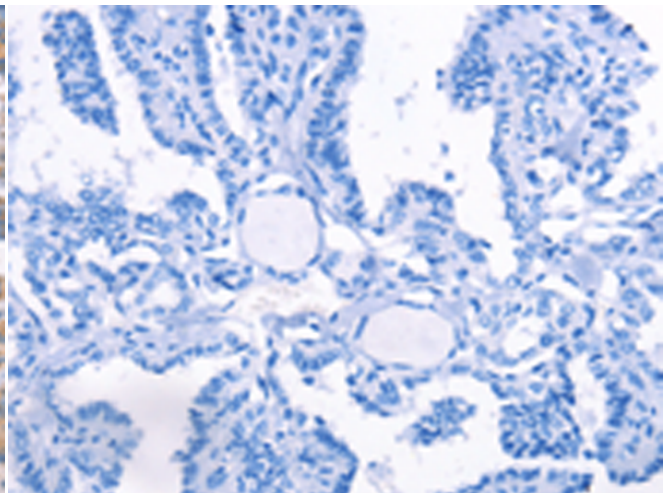
成分: PBS (without Mg²⁺ and Ca²⁺), pH 7.4, 150 mM NaCl, 0.05% Sodium Azide and 40% glycerol

研究领域: Signal Transduction

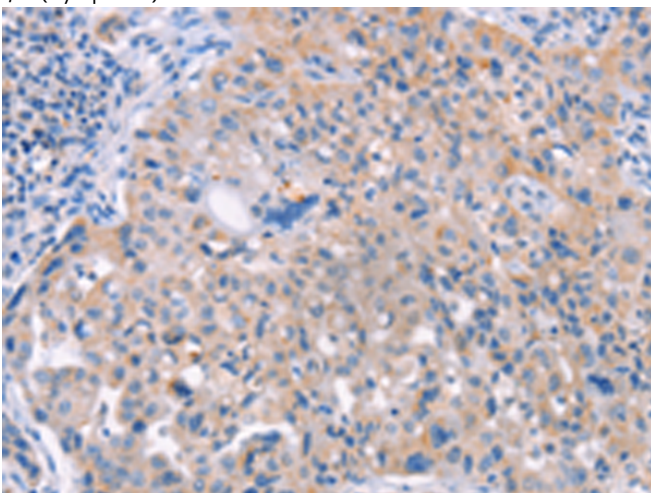
储存和运输: Store at -20°C. Avoid repeated freezing and thawing



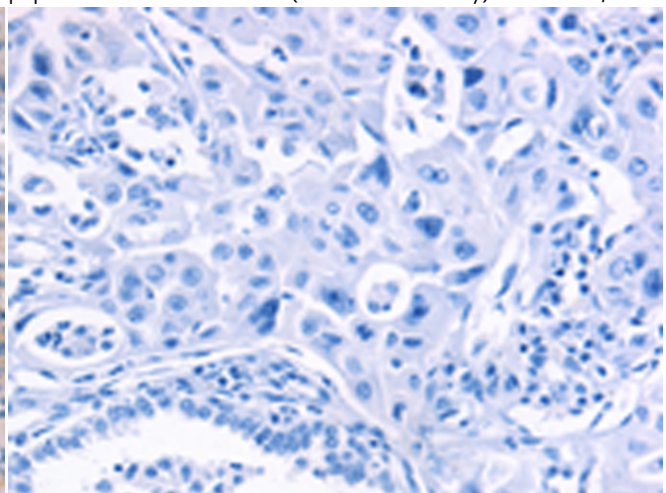
Immunohistochemistry analysis of paraffin embedded Human thyroid cancer tissue using 220295 (APIB1 Antibody) at a dilution of 1/70 (Cytoplasm).



In comparison with the IHC on the left, the same paraffin-embedded Human thyroid cancer tissue is first treated with the synthetic peptide and then with 220295 (Anti-APIB1 Antibody) at dilution 1/70.



The image on the left is immunohistochemistry of paraffin-embedded Human Lung cancer tissue using 220295 (Anti-APIB1 Antibody) at a dilution of 1/70.



In comparison with the IHC on the left, the same paraffin-embedded Human Lung cancer tissue is first treated with synthetic peptide and then with D261284 (Anti-APIB1 Antibody) at dilution 1/70.



Product Description

Pioneering GTPase and Oncogene Product Development since 2010
