

## ANXA8 RABBIT PAB

货号: S216333

产品全名: ANXA8 兔多抗

基因符号: ANX8; CH17-360D5.2

**UNIPROT ID:** P13928 (Gene Accession - BC073755)

**背景:** This gene encodes a member of the annexin family of evolutionarily conserved Ca<sup>2+</sup> and phospholipid binding proteins. The encoded protein may function as an anticoagulant that indirectly inhibits the thromboplastin-specific complex. Overexpression of this gene has been associated with acute myelocytic leukemia. A highly similar duplicated copy of this gene is found in close proximity on the long arm of chromosome 10.

**抗原:** Fusion protein of human ANXA8

**经过测试的应用:** ELISA, WB, IHC

**推荐稀释比:** IHC: 50-100;WB: 500-2000;ELISA: 5000-10000

**种属反应性:** Rabbit

**克隆性:** Rabbit Polyclonal

**亚型:** Immunogen-specific rabbit IgG

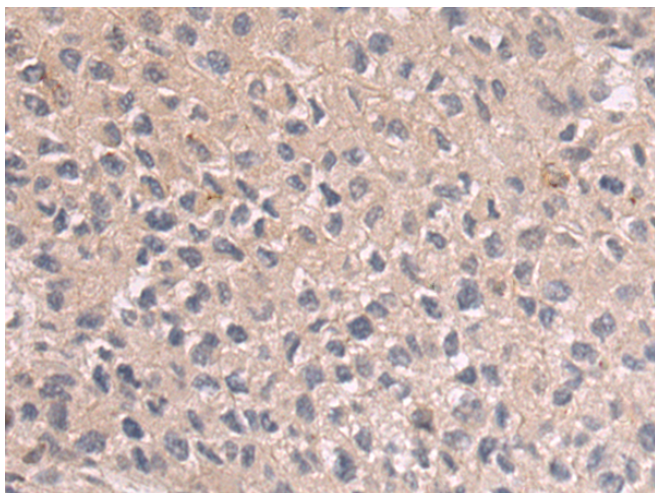
**纯化:** Antigen affinity purification

**种属反应性:** Human, Mouse, Rat

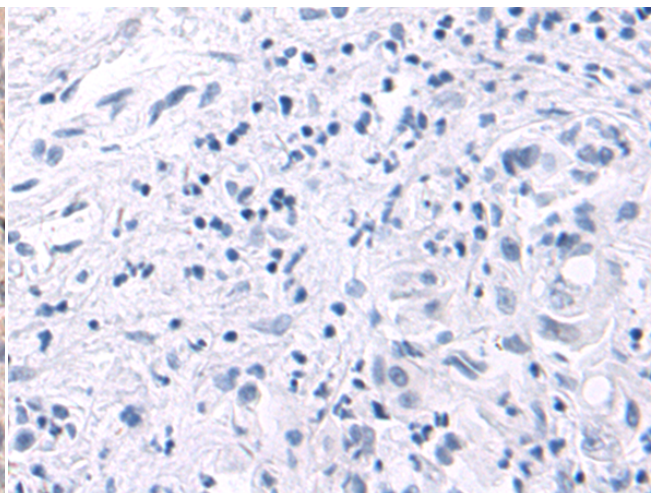
**成分:** PBS (without Mg<sup>2+</sup> and Ca<sup>2+</sup>), pH 7.4, 150 mM NaCl, 0.05% Sodium Azide and 40% glycerol

**研究领域:** Signal Transduction, Cardiovascular

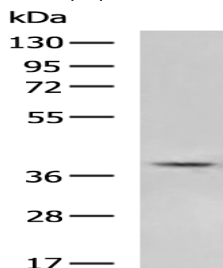
**储存和运输:** Store at -20°C. Avoid repeated freezing and thawing



Immunohistochemistry analysis of paraffin embedded Human liver cancer tissue using 216333(ANXA8 Antibody) at a dilution of 1/55(Cytoplasm).



In comparison with the IHC on the left, the same paraffin-embedded Human liver cancer tissue is first treated with the fusion protein and then with 216333(Anti-ANXA8 Antibody) at dilution 1/55.



Gel: 8%SDS-PAGE, Lysate: 40 µg;

Lane: Human right lower lung cancer tissue lysate;

Primary antibody: 216333(ANXA8 Antibody) at dilution 1/400;

Secondary antibody: HRP-conjugated Goat anti rabbit IgG at 1/5000 dilution;

Exposure time: 30 seconds