

ANTERIOR GRADIENT 2 RABBIT MAB

货号: N261650

产品全名: Anterior Gradient 2 兔单克隆抗体

基因符号 Anterior gradient protein 2 homolog; AG-2; hAG-2; HPC8;
Secreted cement gland protein XAG-2 homolog; AGR2; AG2; GOB4; XAG2

UNIPROT ID: O95994

背景: AGR2 is a member of the protein disulfide isomerase (PDI) family of proteins and a homolog of the *Xenopus laevis* cement gland protein. Required for MUC2 post-transcriptional synthesis and secretion. May play a role in the production of mucus by intestinal cells (By similarity). Proto-oncogene that may play a role in cell migration, cell differentiation and cell growth.

抗原: A synthetic peptide of human Anterior Gradient 2

经过测试的应用: WB,IHC-F,IHC-P,ICC/IF,IP

推荐稀释比: WB: 1/500-1/1000 IHC: 1/50-1/100 IF: 1/50-1/200 IP: 1/20

种属反应性: Rabbit

克隆性: Rabbit Monoclonal

克隆编号: R04-1H6

分子量: Calculated MW: 20 kDa; Observed MW: 20 kDa

亚型: IgG

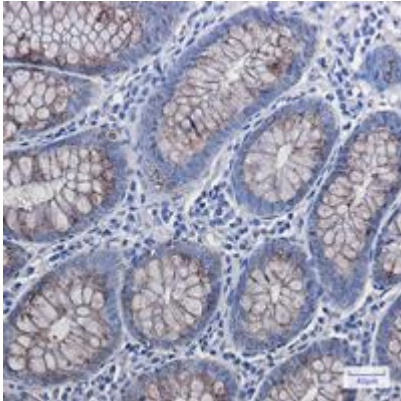
纯化: Affinity Purified

种属反应性: Human,Rat

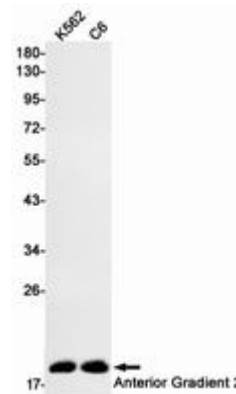
成分: PBS (without Mg²⁺ and Ca²⁺), pH 7.3 containing 50% glycerol, 0.5% BSA and 0.02% sodium azide

研究领域: Cancer

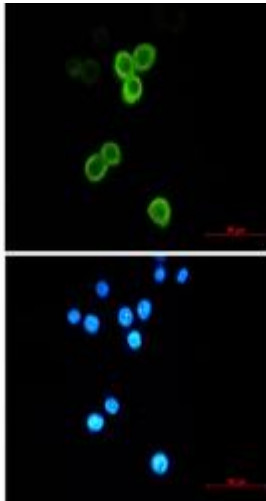
储存和运输: Store at -20°C. Avoid repeated freezing and thawing



Immunohistochemistry analysis of paraffin-embedded colon using Anterior Gradient 2 antibody. High-pressure and temperature Sodium Citrate pH 6.0 was used for antigen retrieval.



Western blot analysis of Anterior Gradient 2 in K562, C6 lysates using Anterior Gradient 2 antibody.



Immunocytochemistry analysis of Anterior Gradient 2 (green) in MCF-7 using Anterior Gradient 2 antibody, and DAPI (blue)