

## ANP32C RABBIT PAB

货号: S213848

产品全名: ANP32C 兔多抗

基因符号 PP32R1

**UNIPROT ID:** O43423 (Gene Accession - NP\_036535 )

**背景:** Predicted to enable histone binding activity. Predicted to be involved in nucleocytoplasmic transport and regulation of apoptotic process. Predicted to be active in perinuclear region of cytoplasm. [provided by Alliance of Genome Resources, Apr 2022]

**抗原:** Synthetic peptide of human ANP32C

**经过测试的应用:** ELISA, IHC

**推荐稀释比:** IHC: 50-100; ELISA: 5000-10000

**种属反应性:** Rabbit

**克隆性:** Rabbit Polyclonal

**亚型:** Immunogen-specific rabbit IgG

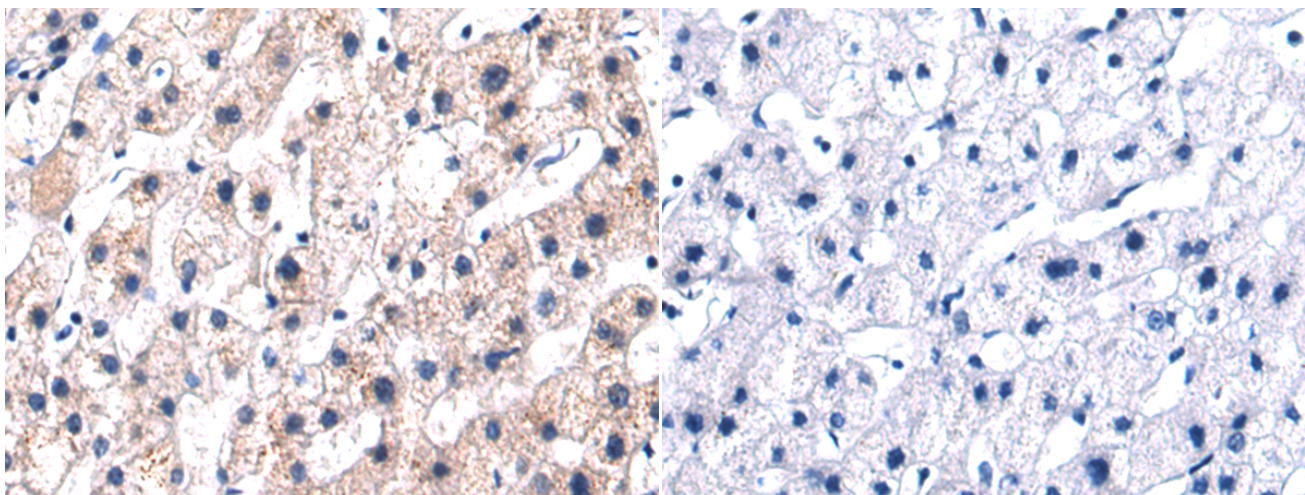
**纯化:** Antigen affinity purification

**种属反应性:** Human

**成分:** PBS (without Mg<sup>2+</sup> and Ca<sup>2+</sup>), pH 7.4, 150 mM NaCl, 0.05% Sodium Azide and 40% glycerol

**研究领域:** Cancer

**储存和运输:** Store at -20°C. Avoid repeated freezing and thawing



Immunohistochemistry analysis of paraffin embedded Human liver cancer tissue using 213848(ANP32C Antibody) at a dilution of 1/50(Cytoplasm).

In comparison with the IHC on the left, the same paraffin-embedded Human liver cancer tissue is first treated with the synthetic peptide and then with 213848(Anti-ANP32C Antibody) at dilution 1/50.