

ANNEXIN A2 RABBIT PAB

货号: N225822

产品全名: Annexin A2 兔多抗

基因符号 ANXA2; ANX2; ANX2L4; CAL1H; LPC2D; Annexin A2; Annexin II; Annexin-2; Calpactin I heavy chain; Calpactin-1 heavy chain; Chromobindin-8; Lipocortin II; Placental anticoagulant protein IV; PAP-IV; Protein I; p36

UNIPROT ID: P07355

背景: Originally identified as a protein inhibitor of phospholipase A2, annexin A2 has subsequently been shown to interact with an array of protein and non-protein partners, including F-actin, spectrin, SNARE complexes, RNA, and virus particles.

抗原: A synthesized peptide derived from human Annexin A2

经过测试的应用: WB,IHC-P,ICC/IF,FC

推荐稀释比: WB: 1/500-1/1000 IHC: 1/50-1/100 IF: 1/50-1/200 FC: 1/50-1/100

种属反应性: Rabbit

克隆性: Rabbit Polyclonal

分子量: Calculated MW: 39 kDa; Observed MW: 39 kDa

亚型: IgG

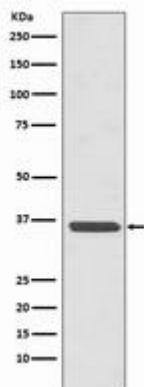
纯化: Affinity Chromatography

种属反应性: Human, Mouse and Rat

成分: PBS (without Mg²⁺ and Ca²⁺), pH 7.3 containing 50% glycerol, 0.5% BSA and 0.02% sodium azide

研究领域: Signal Transduction

储存和运输: Store at -20°C. Avoid repeated freezing and thawing



Western blot analysis of Annexin A2 in HeLa lysates using Annexin A2 antibody.



Product Description

Pioneering GTPase and Oncogene Product Development since 2010
