

ANNEXIN A2 RABBIT MAB

货号: N261845

产品全名: Annexin A2 兔单克隆抗体

基因符号 ANXA2; ANX2; ANX2L4; CAL1H; LPC2D; Annexin A2; Annexin II; Annexin-2; Calpactin I heavy chain; Calpactin-1 heavy chain; Chromobindin-8; Lipocortin II; Placental anticoagulant protein IV; PAP-IV; Protein I; p36

UNIPROT ID: P07355

背景: Originally identified as a protein inhibitor of phospholipase A2, annexin A2 has subsequently been shown to interact with an array of protein and non-protein partners, including F-actin, spectrin, SNARE complexes, RNA, and virus particles.

抗原: A synthetic peptide of human Annexin A2

经过测试的应用: WB, ICC/IF

推荐稀释比: WB: 1/500-1/1000 IF: 1/50-1/200

种属反应性: Rabbit

克隆性: Rabbit Monoclonal

克隆编号: R09-5C1

分子量: Calculated MW: 39 kDa; Observed MW: 39 kDa

亚型: IgG

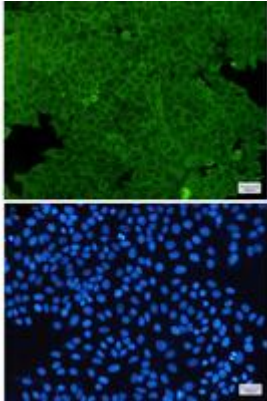
纯化: Affinity Purified

种属反应性: Human, Mouse and Rat

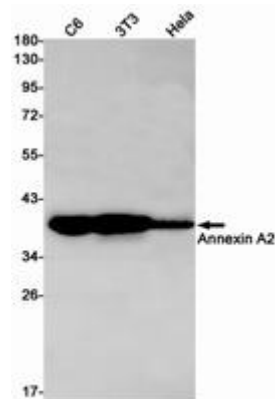
成分: PBS (without Mg²⁺ and Ca²⁺), pH 7.3 containing 50% glycerol, 0.5% BSA and 0.02% sodium azide

研究领域: Signal Transduction

储存和运输: Store at -20°C. Avoid repeated freezing and thawing



Immunocytochemistry analysis of Annexin A2 (green) in HeLa using Annexin A2 antibody, and DAPI (blue)



Western blot analysis of Annexin A2 in C6, 3T3, HeLa lysates using Annexin A2 antibody.