

ANGPTL2 RABBIT PAB

货号: S222390

产品全名: ANGPTL2 兔多抗

基因符号: ARP2; HARP

UNIPROT ID: Q9UKU9 (Gene Accession - NP_036230)

背景: Angiopoietins are members of the vascular endothelial growth factor family and the only known growth factors largely specific for vascular endothelium. Angiopoietin-1, angiopoietin-2, and angiopoietin-4 participate in the formation of blood vessels. ANGPTL2 protein is a secreted glycoprotein with homology to the angiopoietins and may exert a function on endothelial cells through autocrine or paracrine action.

抗原: Synthetic peptide of human ANGPTL2

经过测试的应用: ELISA, IHC

推荐稀释比: IHC: 50-200; ELISA: 5000-10000

种属反应性: Rabbit

克隆性: Rabbit Polyclonal

亚型: Immunogen-specific rabbit IgG

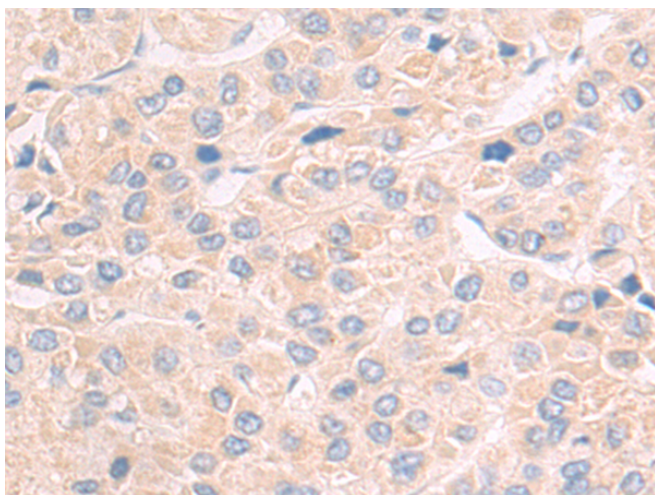
纯化: Antigen affinity purification

种属反应性: Human, Mouse

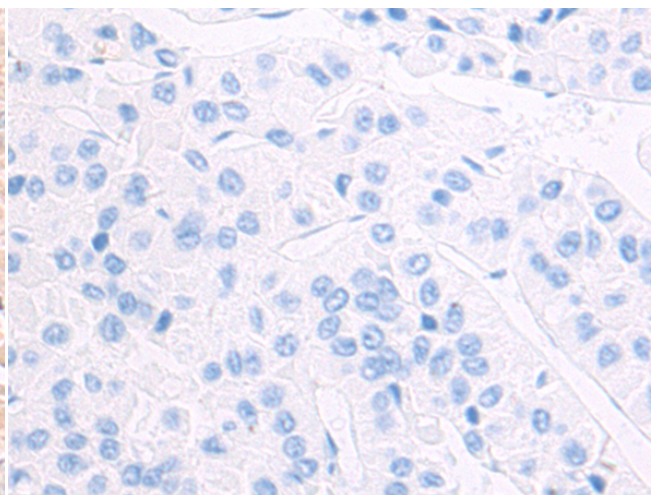
成分: PBS (without Mg²⁺ and Ca²⁺), pH 7.4, 150 mM NaCl, 0.05% Sodium Azide and 40% glycerol

研究领域: Cardiovascular, Stem Cells

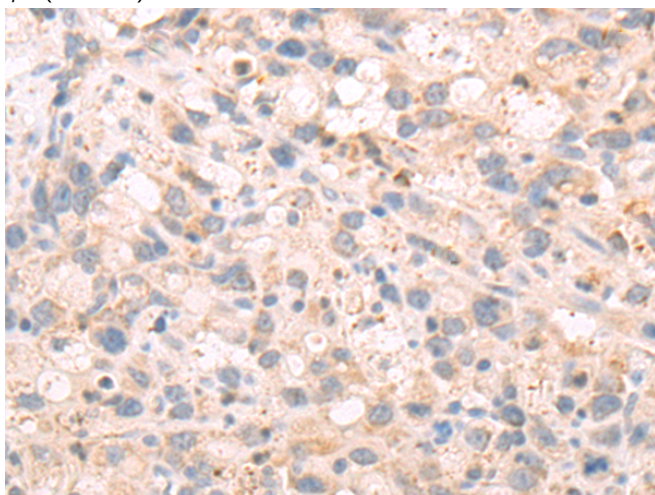
储存和运输: Store at -20°C. Avoid repeated freezing and thawing



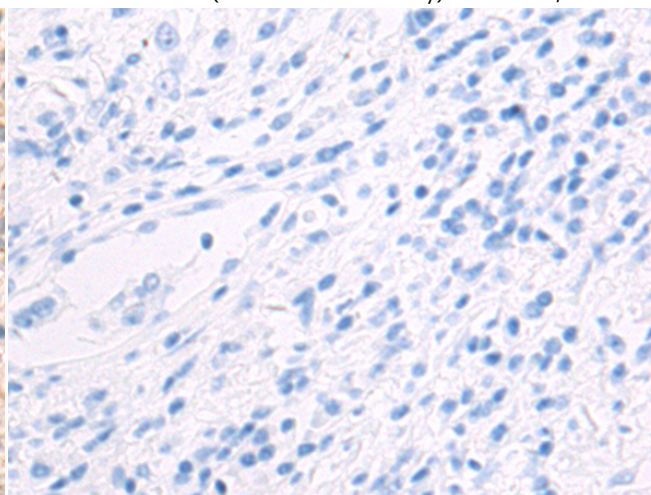
Immunohistochemistry analysis of paraffin embedded Human liver cancer tissue using 222390(ANGPTL2 Antibody) at a dilution of 1/55(Secreted).



In comparison with the IHC on the left, the same paraffin-embedded Human liver cancer tissue is first treated with the synthetic peptide and then with 222390(Anti-ANGPTL2 Antibody) at dilution 1/55.



The image on the left is immunohistochemistry of paraffin-embedded Human gastric cancer tissue using 222390(Anti-ANGPTL2 Antibody) at a dilution of 1/55.



In comparison with the IHC on the left, the same paraffin-embedded Human gastric cancer tissue is first treated with synthetic peptide and then with D264532(Anti-ANGPTL2 Antibody) at dilution 1/55.



Product Description

Pioneering GTPase and Oncogene Product Development since 2010
