

ANGIOTENSIN CONVERTING ENZYME 1 RABBIT MAB

货号: N261842

产品全名: Angiotensin Converting Enzyme 1 兔单克隆抗体

基因符号 ACE; Dipeptidyl carboxypeptidase I; Kininase II

UNIPROT ID: P09470

背景: Converts angiotensin I to angiotensin II by release of the terminal His-Leu, this results in an increase of the vasoconstrictor activity of angiotensin. Also able to inactivate bradykinin, a potent vasodilator. Has also a glycosidase activity which releases GPI-anchored proteins from the membrane by cleaving the mannose linkage in the GPI moiety. This GPIase activity seems to be crucial for the egg-binding ability of the sperm.

抗原: Recombinant protein of mouse Angiotensin Converting Enzyme 1

经过测试的应用: WB,IHC-P

推荐稀释比: WB: 1/500-1/1000 IHC: 1/50-1/100

种属反应性: Rabbit

克隆性: Rabbit Monoclonal

克隆编号: R01-9E3

分子量: Calculated MW: 151 kDa; Observed MW: 180 kDa

亚型: IgG

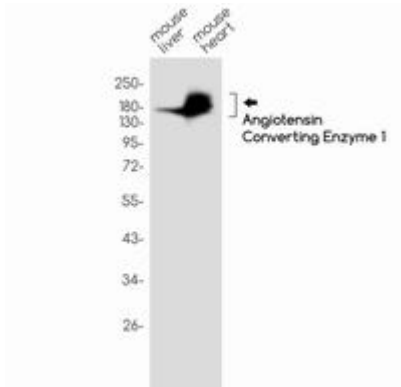
纯化: Affinity Purified

种属反应性: Mouse,Rat

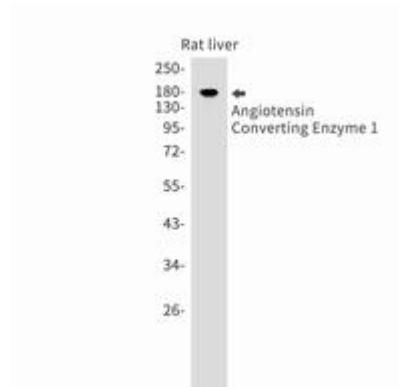
成分: PBS (without Mg²⁺ and Ca²⁺), pH 7.3 containing 50% glycerol, 0.5% BSA and 0.02% sodium azide

研究领域: Cardiovascular

储存和运输: Store at -20°C. Avoid repeated freezing and thawing



Western blot analysis of Angiotensin Converting Enzyme 1 in mouse liver, mouse heart lysates using Angiotensin Converting Enzyme 1 antibody.



Western blot analysis of Angiotensin Converting Enzyme 1 in rat liver lysates using Angiotensin Converting Enzyme 1 antibody.