

ANAPC15 RABBIT PAB

货号: S221635

产品全名: ANAPC15 兔多抗

基因符号: APC15; HSPC020; C11orf51

UNIPROT ID: P60006 (Gene Accession - NP_054761)

背景: Involved in regulation of mitotic cell cycle spindle assembly checkpoint. Part of anaphase-promoting complex. [provided by Alliance of Genome Resources, Apr 2022]

抗原: Synthetic peptide of human ANAPC15

经过测试的应用: ELISA, IHC

推荐稀释比: IHC: 100-300; ELISA: 5000-10000

种属反应性: Rabbit

克隆性: Rabbit Polyclonal

亚型: Immunogen-specific rabbit IgG

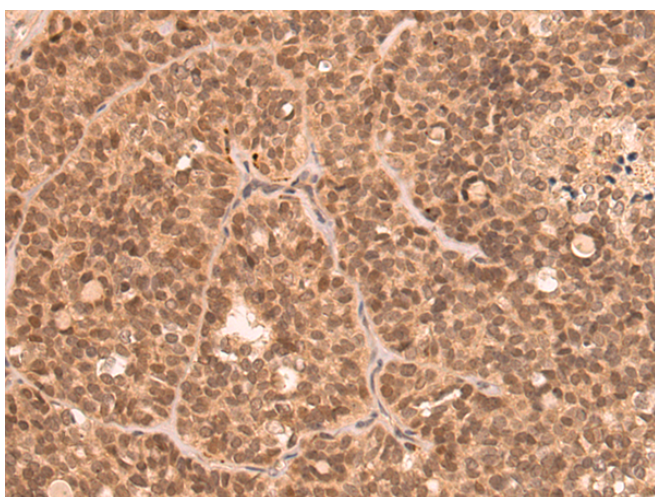
纯化: Antigen affinity purification

种属反应性: Human, Mouse, Rat

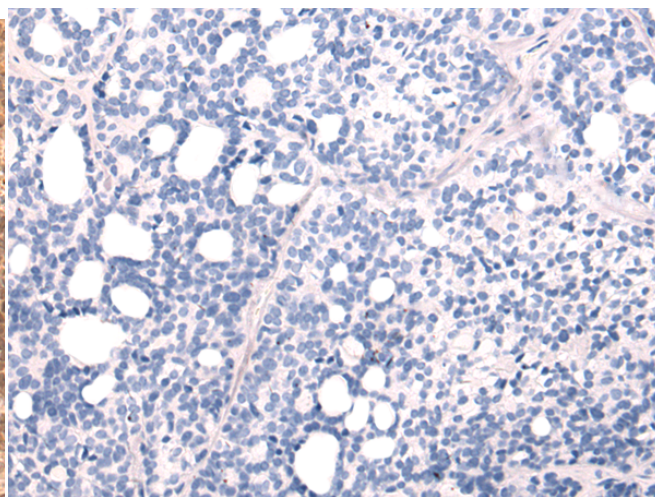
成分: PBS (without Mg²⁺ and Ca²⁺), pH 7.4, 150 mM NaCl, 0.05% Sodium Azide and 40% glycerol

研究领域: Cell Biology

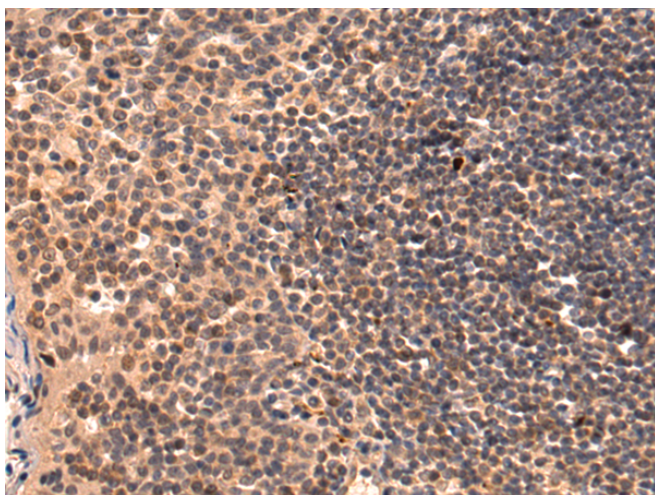
储存和运输: Store at -20°C. Avoid repeated freezing and thawing



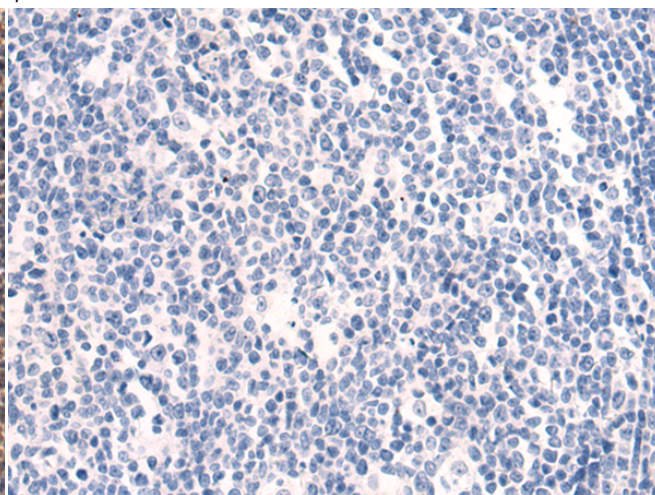
Immunohistochemistry analysis of paraffin embedded Human thyroid cancer tissue using 221635(ANAPC15 Antibody) at a dilution of 1/50(Cytoplasm and Nucleus).



In comparison with the IHC on the left, the same paraffin-embedded Human thyroid cancer tissue is first treated with the synthetic peptide and then with 221635(Anti-ANAPC15 Antibody) at dilution 1/50.



The image on the left is immunohistochemistry of paraffin-embedded Human tonsil tissue using 221635(Anti-ANAPC15 Antibody) at a dilution of 1/50.



In comparison with the IHC on the left, the same paraffin-embedded Human tonsil tissue is first treated with synthetic peptide and then with D263320(Anti-ANAPC15 Antibody) at dilution 1/50.



Product Description

Pioneering GTPase and Oncogene Product Development since 2010
