

## AMYLOID PRECURSOR PROTEIN RABBIT MAB

货号: N261635

产品全名: Amyloid Precursor Protein 兔单克隆抗体

基因符号 APP; A4; AD1; Amyloid beta A4 protein; ABPP; APPI; APP;  
Alzheimer disease amyloid protein; Cerebral vascular amyloid peptide;  
CVAP; PreA4; Protease nexin-II; PN-II

**UNIPROT ID:** P05067

背景: APP a cell surface receptor that influences neurite growth, neuronal adhesion and axonogenesis. Cleaved by secretases to form a number of peptides, some of which bind to the acetyltransferase complex Fe65/TIP60 to promote transcriptional activation.

抗原: A synthetic peptide of human Amyloid Precursor 蛋白

经过测试的应用: WB,IHC-F,IHC-P,ICC/IF,IP

推荐稀释比: WB: 1/500-1/1000 IHC: 1/50-1/100 IF: 1/50-1/200 IP: 1/20

种属反应性: Rabbit

克隆性: Rabbit Monoclonal

克隆编号: R05-3E3

分子量: Calculated MW: 87 kDa; Observed MW: 100 kDa

亚型: IgG

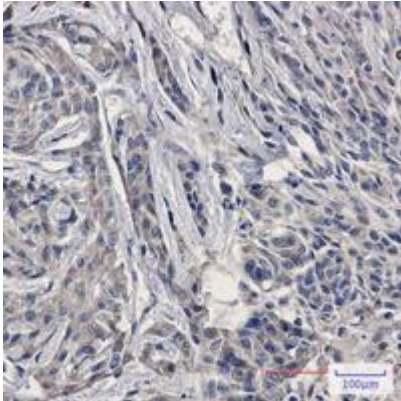
纯化: Affinity Purified

种属反应性: Human, Mouse and Rat

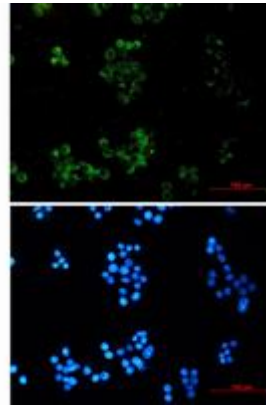
成分: PBS (without Mg<sup>2+</sup> and Ca<sup>2+</sup>), pH 7.3 containing 50% glycerol, 0.5% BSA and 0.02% sodium azide

研究领域: Neuroscience

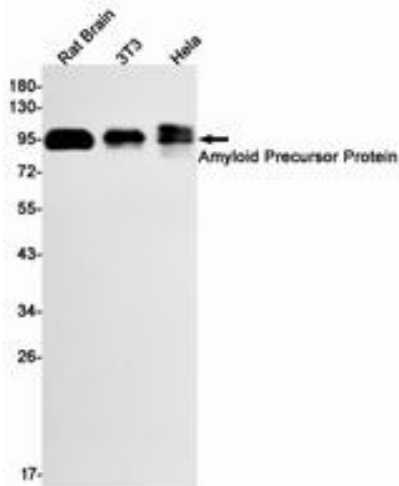
储存和运输: Store at -20°C. Avoid repeated freezing and thawing



Immunohistochemistry analysis of paraffin-embedded Human brain using Amyloid Precursor Protein antibody. High-pressure and temperature Sodium Citrate pH 6.0 was used for antigen retrieval.



Immunocytochemistry analysis of Amyloid Precursor Protein (green) in HeLa using Amyloid Precursor Protein antibody, and DAPI (blue).



Western blot analysis of Amyloid Precursor Protein in rat Brain, 3T3, HeLa lysates using Amyloid Precursor Protein antibody