

AMBP RABBIT PAB

货号: S216984

产品全名: AMBP 兔多抗

基因符号 AIM; HCP; ITI; UTI; EDCI; HI30; ITIL; IATIL; ITILC

UNIPROT ID: P02760 (Gene Accession - BC041593)

背景: This gene encodes a complex glycoprotein secreted in plasma. The precursor is proteolytically processed into distinct functioning proteins: alpha-1-microglobulin, which belongs to the superfamily of lipocalin transport proteins and may play a role in the regulation of inflammatory processes, and bikunin, which is a urinary trypsin inhibitor belonging to the superfamily of Kunitz-type protease inhibitors and plays an important role in many physiological and pathological processes. This gene is located on chromosome 9 in a cluster of lipocalin genes.

抗原: Fusion protein of human AMBP

经过测试的应用: ELISA, IHC

推荐稀释比: IHC: 25-100; ELISA: 2000-5000

种属反应性: Rabbit

克隆性: Rabbit Polyclonal

亚型: Immunogen-specific rabbit IgG

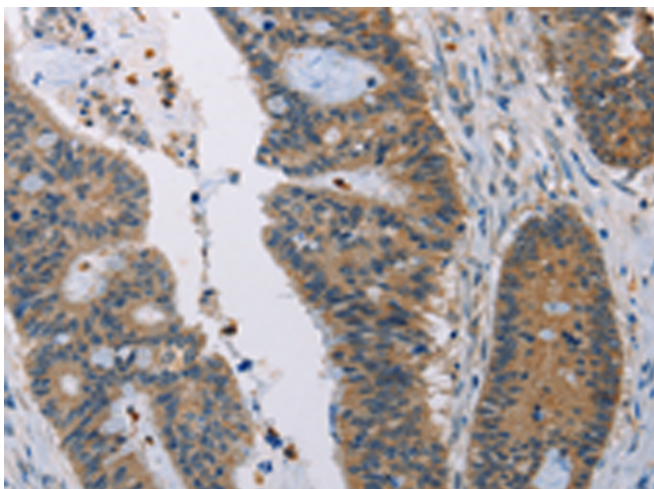
纯化: Antigen affinity purification

种属反应性: Human

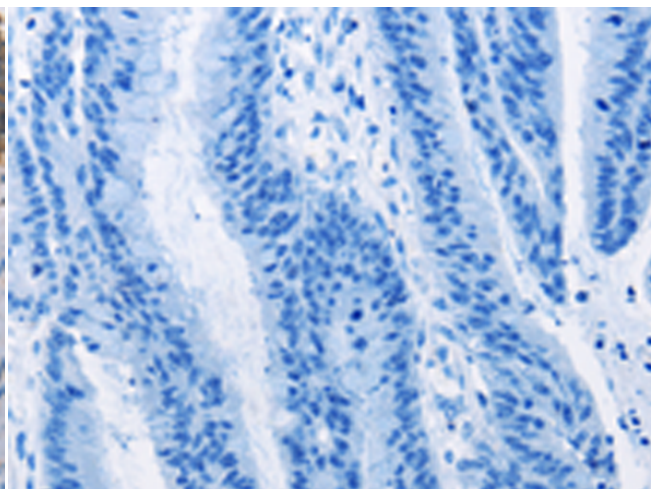
成分: PBS (without Mg²⁺ and Ca²⁺), pH 7.4, 150 mM NaCl, 0.05% Sodium Azide and 40% glycerol

研究领域: Cell Biology

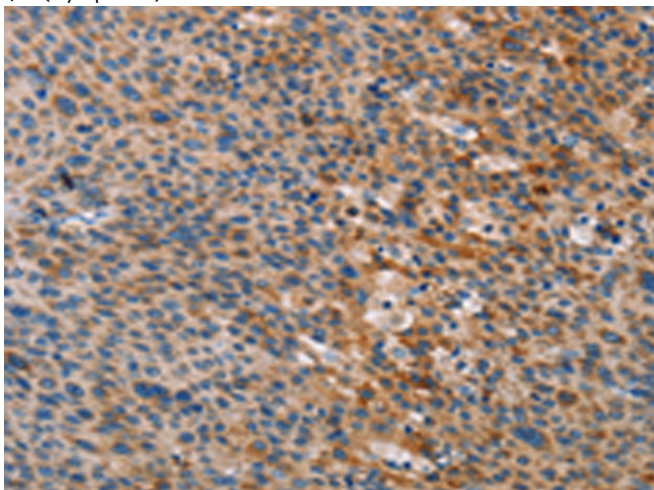
储存和运输: Store at -20°C. Avoid repeated freezing and thawing



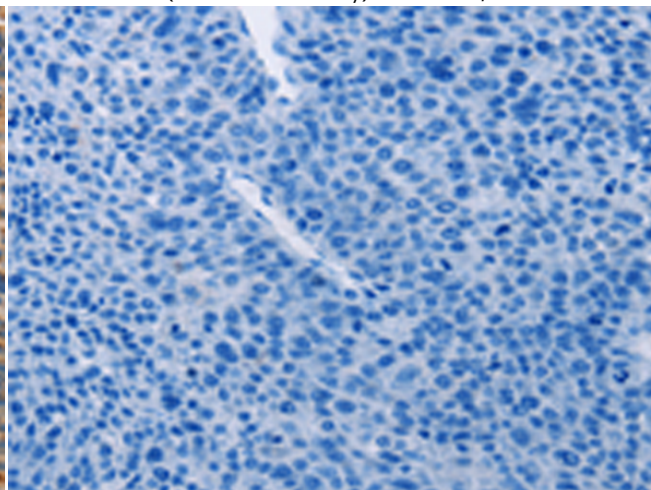
Immunohistochemistry analysis of paraffin embedded Human colon cancer tissue using 216984(AMBP Antibody) at a dilution of 1/35(Cytoplasm).



In comparison with the IHC on the left, the same paraffin-embedded Human colon cancer tissue is first treated with the fusion protein and then with 216984(Anti-AMBP Antibody) at dilution 1/35.



The image on the left is immunohistochemistry of paraffin-embedded Human liver cancer tissue using 216984(Anti-AMBP Antibody) at a dilution of 1/35.



In comparison with the IHC on the left, the same paraffin-embedded Human liver cancer tissue is first treated with fusion protein and then with D221587(Anti-AMBP Antibody) at dilution 1/35.



Product Description

Pioneering GTPase and Oncogene Product Development since 2010
