

ALYREF RABBIT PAB

货号: S213803

产品全名: ALYREF 兔多抗

基因符号: ALY; BEF; REF; THOC4; ALY/REF

UNIPROT ID: Q86V81 (Gene Accession - NP_005773)

背景: The protein encoded by this gene is a heat stable, nuclear protein and functions as a molecular chaperone. It is thought to regulate dimerization, DNA binding, and transcriptional activity of basic region-leucine zipper (bZIP) proteins.

抗原: Synthetic peptide of human ALYREF

经过测试的应用: ELISA, IHC

推荐稀释比: IHC: 25-100; ELISA: 2000-5000

种属反应性: Rabbit

克隆性: Rabbit Polyclonal

亚型: Immunogen-specific rabbit IgG

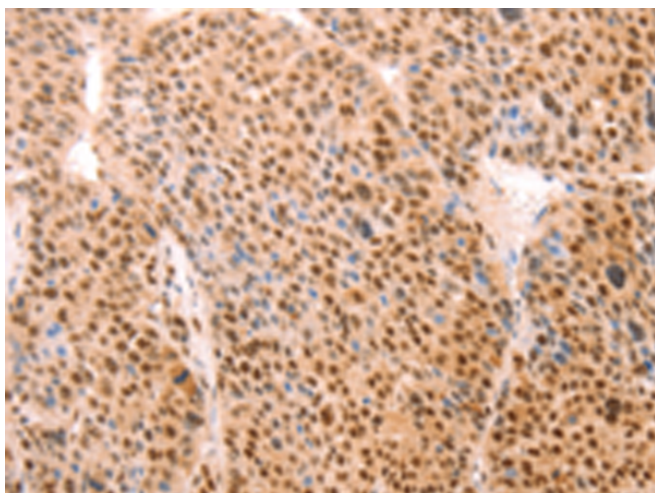
纯化: Antigen affinity purification

种属反应性: Human, Mouse

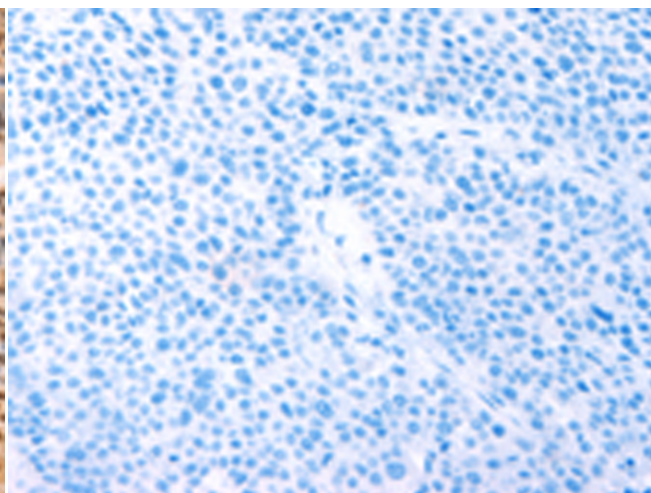
成分: PBS (without Mg²⁺ and Ca²⁺), pH 7.4, 150 mM NaCl, 0.05% Sodium Azide and 40% glycerol

研究领域: Epigenetics and Nuclear Signaling

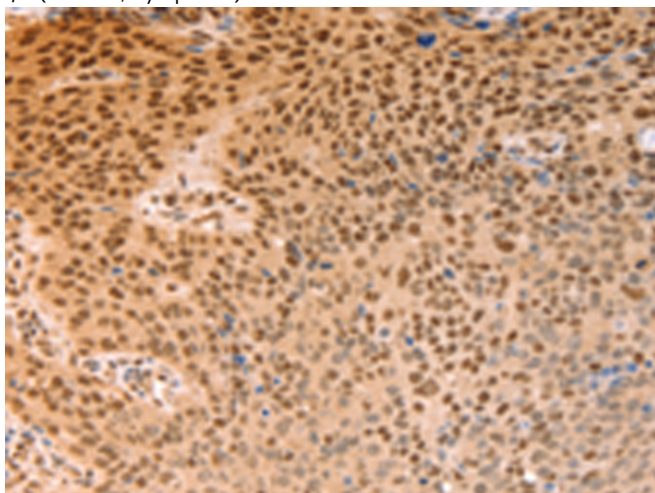
储存和运输: Store at -20°C. Avoid repeated freezing and thawing



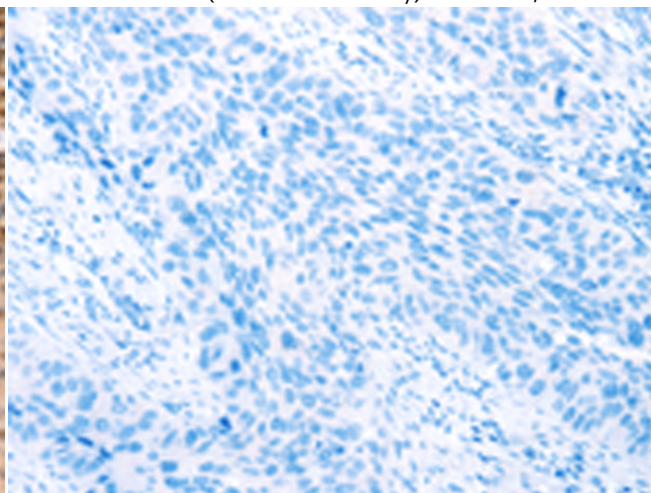
Immunohistochemistry analysis of paraffin embedded Human liver cancer tissue using 213803 (ALYREF Antibody) at a dilution of 1/15 (Nucleus, Cytoplasm).



In comparison with the IHC on the left, the same paraffin-embedded Human liver cancer tissue is first treated with the synthetic peptide and then with 213803 (Anti-ALYREF Antibody) at dilution 1/15.



The image on the left is immunohistochemistry of paraffin-embedded Human lymphoma tissue using 213803 (Anti-ALYREF Antibody) at a dilution of 1/15.



In comparison with the IHC on the left, the same paraffin-embedded Human lymphoma tissue is first treated with synthetic peptide and then with D160858 (Anti-ALYREF Antibody) at dilution 1/15.



Product Description

Pioneering GTPase and Oncogene Product Development since 2010
