

ALPK2 RABBIT PAB

货号: S221382

产品全名: ALPK2 兔多抗

基因符号: HAK

UNIPROT ID: Q86TB3 (Gene Accession - NP_443179)

背景: Predicted to enable ATP binding activity; protein serine kinase activity; and protein serine/threonine kinase activity. Involved in several processes, including epicardium morphogenesis; heart development; and negative regulation of Wnt signaling pathway involved in heart development. Acts upstream of or within regulation of gene expression. Colocalizes with basolateral plasma membrane. [provided by Alliance of Genome Resources, Apr 2022]

抗原: Synthetic peptide of human ALPK2

经过测试的应用: ELISA, IHC

推荐稀释比: IHC: 50-100; ELISA: 5000-10000

种属反应性: Rabbit

克隆性: Rabbit Polyclonal

亚型: Immunogen-specific rabbit IgG

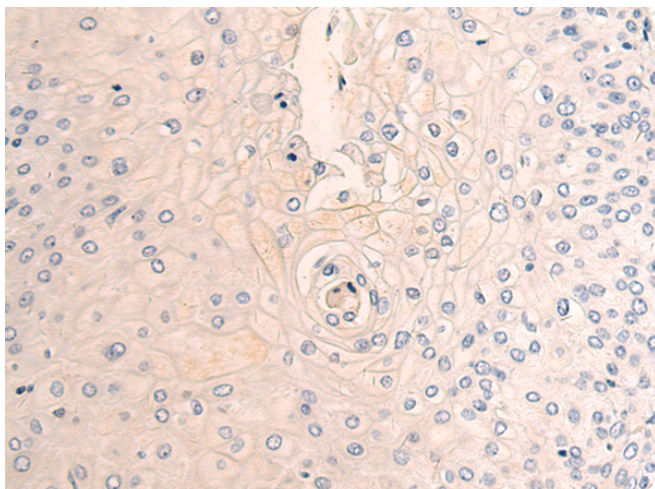
纯化: Antigen affinity purification

种属反应性: Human

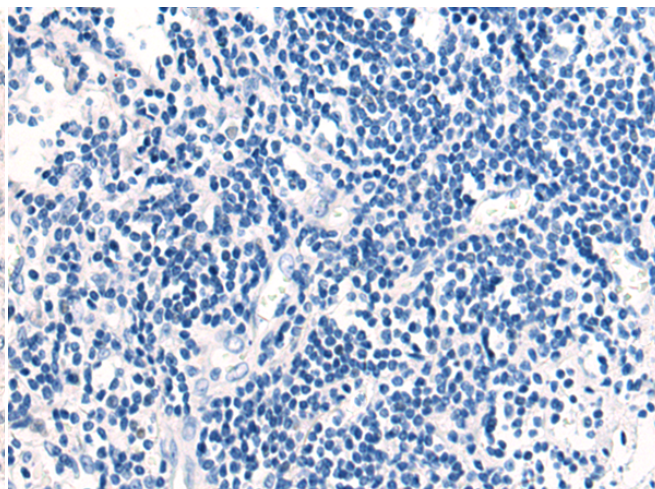
成分: PBS (without Mg²⁺ and Ca²⁺), pH 7.4, 150 mM NaCl, 0.05% Sodium Azide and 40% glycerol

研究领域: Signal Transduction

储存和运输: Store at -20°C. Avoid repeated freezing and thawing



Immunohistochemistry analysis of paraffin embedded Human esophagus cancer tissue using 221382(AlPK2 Antibody) at a dilution of 1/70(Cytoplasm).



In comparison with the IHC on the left, the same paraffin-embedded Human esophagus cancer tissue is first treated with the synthetic peptide and then with 221382(Anti-ALPK2 Antibody) at dilution 1/70.