

## ALPK1 RABBIT PAB

货号: N225155

产品全名: ALPK1 兔多抗

基因符号 ALPK1; KIAA1527; LAK; Alpha-protein kinase 1; Chromosome 4 kinase; Lymphocyte alpha-protein kinase

**UNIPROT ID:** Q96QP1

背景: Serine/threonine-protein kinase that detects bacterial pathogen-associated molecular pattern metabolites (PAMPs) and initiates an innate immune response, a critical step for pathogen elimination and engagement of adaptive immunity.

抗原: The antiserum was produced against synthesized peptide derived from human ALPK1. AA range:11-60

经过测试的应用: WB,IHC-F,IHC-P,ICC/IF,ELISA

推荐稀释比: WB: 1/500-1/1000 IHC: 1/50-1/100 IF: 1/50-1/200 ELISA: 1/10000

种属反应性: Rabbit

克隆性: Rabbit Polyclonal

分子量: Calculated MW: 139 kDa; Observed MW: 139 kDa

亚型: IgG

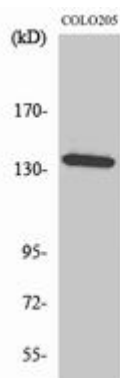
纯化: Affinity Purified

种属反应性: Human,Mouse

成分: PBS (without Mg<sup>2+</sup> and Ca<sup>2+</sup>), pH 7.3 containing 50% glycerol, 0.5% BSA and 0.02% sodium azide

研究领域: Signal Transduction

储存和运输: Store at -20°C. Avoid repeated freezing and thawing



Western blot analysis of ALPK1 in various lysates using ALPK1 antibody.



# Product Description

Pioneering GTPase and Oncogene Product Development since 2010

---