

## ALPI RABBIT PAB

货号: S210849

产品全名: ALPI 兔多抗

基因符号: IAP

**UNIPROT ID:** P09923 (Gene Accession - BC132678)

**背景:** There are at least four distinct but related alkaline phosphatases: intestinal, placental, placental-like, and liver/bone/kidney (tissue non-specific). The intestinal alkaline phosphatase gene encodes a digestive brush-border enzyme. This enzyme is upregulated during small intestinal epithelial cell differentiation.

**抗原:** Fusion protein of human ALPI

**经过测试的应用:** ELISA, IHC

**推荐稀释比:** IHC: 25-100; ELISA: 2000-5000

**种属反应性:** Rabbit

**克隆性:** Rabbit Polyclonal

**亚型:** Immunogen-specific rabbit IgG

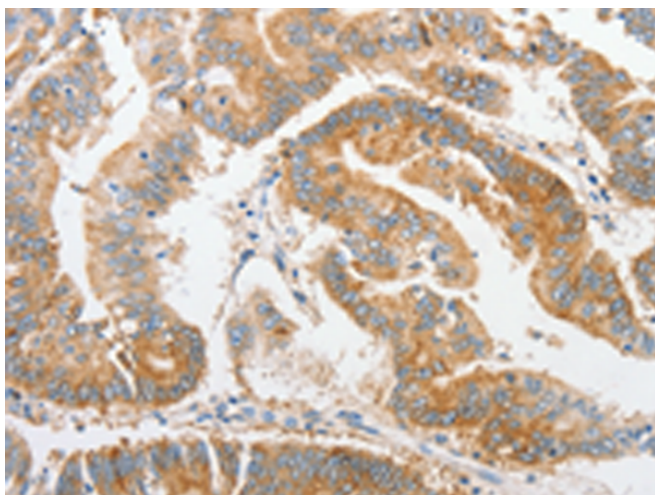
**纯化:** Antigen affinity purification

**种属反应性:** Human

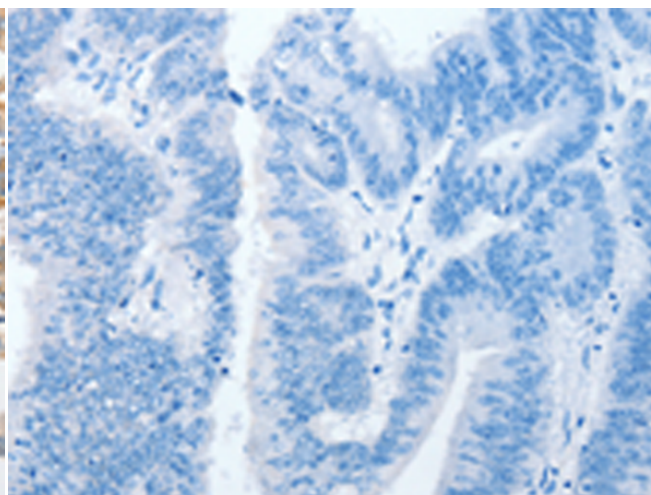
**成分:** PBS (without Mg<sup>2+</sup> and Ca<sup>2+</sup>), pH 7.4, 150 mM NaCl, 0.05% Sodium Azide and 40% glycerol

**研究领域:** Cancer

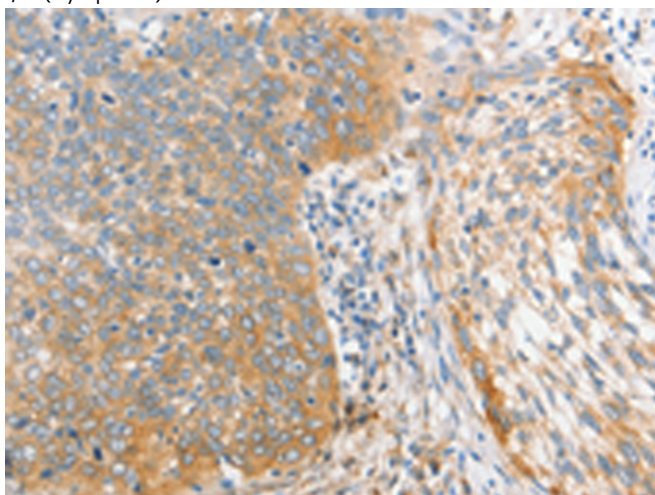
**储存和运输:** Store at -20°C. Avoid repeated freezing and thawing



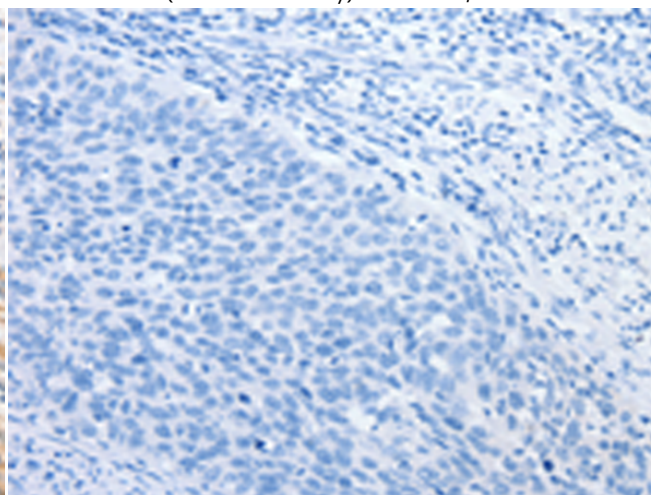
Immunohistochemistry analysis of paraffin embedded Human colon cancer tissue using 210849(AlPI Antibody) at a dilution of 1/25(Cytoplasm).



In comparison with the IHC on the left, the same paraffin-embedded Human colon cancer tissue is first treated with the fusion protein and then with 210849(Anti-ALPI Antibody) at dilution 1/25.



The image on the left is immunohistochemistry of paraffin-embedded Human cervical cancer tissue using 210849(Anti-ALPI Antibody) at a dilution of 1/25.



In comparison with the IHC on the left, the same paraffin-embedded Human cervical cancer tissue is first treated with fusion protein and then with D121748(Anti-ALPI Antibody) at dilution 1/25.



# Product Description

Pioneering GTPase and Oncogene Product Development since 2010

---