

ALPHA TUBULIN RABBIT MAB

货号: N261831

产品全名: alpha Tubulin 兔单克隆抗体

基因符号 ALS22; TUBA1; H2-ALPHA

UNIPROT ID: P68366

背景: TUBA1A Tubulin is the major constituent of microtubules. It binds two moles of GTP, one at an exchangeable site on the beta chain and one at a non-exchangeable site on the alpha-chain.

抗原: A synthetic peptide of human alpha Tubulin

经过测试的应用: WB,IHC-F,IHC-P,ICC/IF,IP

推荐稀释比: WB: 1/500-1/1000 IHC: 1/50-1/100 IF: 1/50-1/200 IP: 1/20

种属反应性: Rabbit

克隆性: Rabbit Monoclonal

克隆编号: R02-2H3

分子量: Calculated MW: 50 kDa; Observed MW: 50 kDa

亚型: IgG

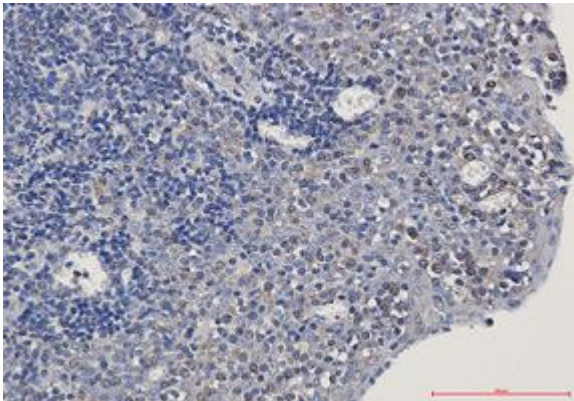
纯化: Affinity Purified

种属反应性: Human, Mouse and Rat,Hamster

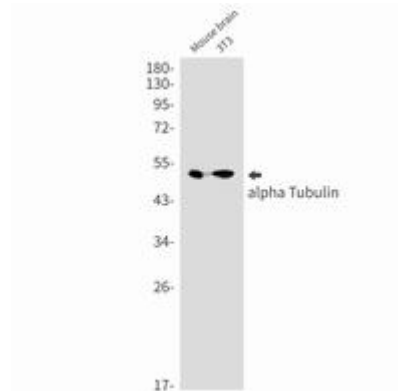
成分: PBS (without Mg²⁺ and Ca²⁺), pH 7.3 containing 50% glycerol, 0.5% BSA and 0.02% sodium azide

研究领域: Signal Transduction

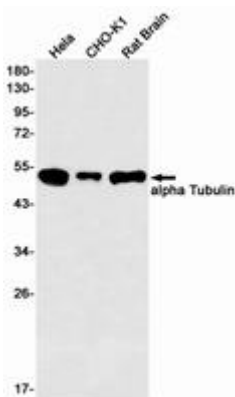
储存和运输: Store at -20°C. Avoid repeated freezing and thawing



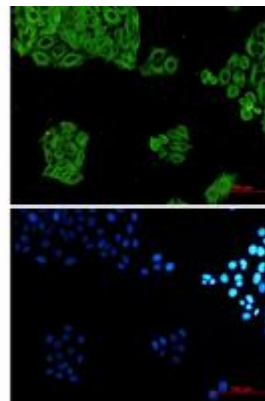
Immunohistochemistry analysis of paraffin-embedded Human tonsil using alpha Tubulin antibody. High-pressure and temperature Sodium Citrate pH 6.0 was used for antigen retrieval.



Western blot analysis of alpha Tubulin in mouse brain, 3T3 lysates using alpha Tubulin antibody.



Western blot analysis of alpha Tubulin in HeLa, CHO-K1, rat Brain lysates using alpha Tubulin antibody.



Immunocytochemistry analysis of alpha Tubulin (green) in HeLa using alpha Tubulin antibody, and DAPI (blue).