

ALPHA TUBULIN RABBIT MAB

货号: N261832

产品全名: alpha Tubulin 兔单克隆抗体

基因符号 ALS22; TUBA1; H2-ALPHA

UNIPROT ID: P68366

背景: TUBA1A Tubulin is the major constituent of microtubules. It binds two moles of GTP, one at an exchangeable site on the beta chain and one at a non-exchangeable site on the alpha-chain.

抗原: A synthetic peptide of human alpha Tubulin

经过测试的应用: WB,IP

推荐稀释比: WB: 1/500-1/1000 IP: 1/20

种属反应性: Rabbit

克隆性: Rabbit Monoclonal

克隆编号: R02-9H1

分子量: Calculated MW: 50 kDa; Observed MW: 50 kDa

亚型: IgG

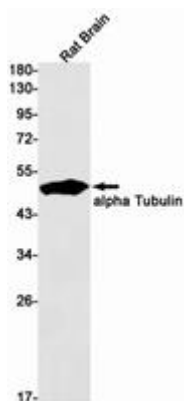
纯化: Affinity Purified

种属反应性: Mouse,Rat

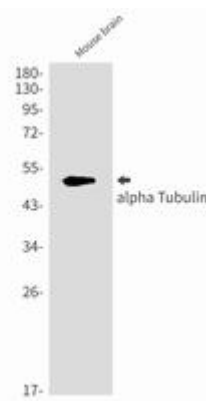
成分: PBS (without Mg²⁺ and Ca²⁺), pH 7.3 containing 50% glycerol, 0.5% BSA and 0.02% sodium azide

研究领域: Signal Transduction

储存和运输: Store at -20°C. Avoid repeated freezing and thawing



Western blot analysis of alpha Tubulin in rat Brain lysates using alpha Tubulin antibody.



Western blot analysis of alpha Tubulin in mouse brain lysates using alpha Tubulin antibody.



Product Description

Pioneering GTPase and Oncogene Product Development since 2010
