

ALPHA TUBULIN (4C9) MOUSE MAB

货号: N261207

产品全名: alpha Tubulin (4C9) 小鼠单抗

基因符号 Tubulin alpha-1B chain; Alpha-tubulin ubiquitous; Tubulin K-alpha-1; Tubulin alpha-ubiquitous chain

UNIPROT ID: P68363

背景: TUBA1A Tubulin is the major constituent of microtubules. It binds two moles of GTP, one at an exchangeable site on the beta chain and one at a non-exchangeable site on the alpha-chain.

抗原: Recombinant Protein of Tubulin alpha-1A chain

经过测试的应用: WB,IHC-F,IHC-P,ICC/IF,IP

推荐稀释比: WB: 1/500-1/1000 IHC: 1/50-1/100 IF: 1/50-1/200 IP: 1/20

种属反应性: Mouse

克隆性: Mouse Monoclonal

克隆编号: 4C9-6H6-4F7

分子量: Calculated MW: 50 kDa; Observed MW: 50 kDa

亚型: IgG1

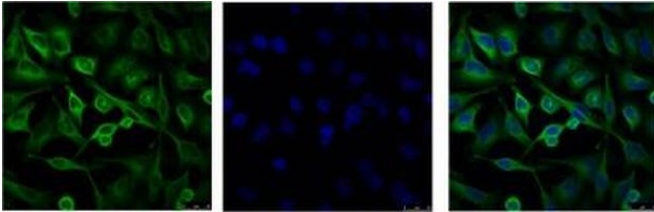
纯化: Affinity Purified

种属反应性: Human,Rat,Mouse

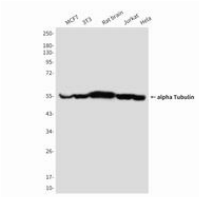
成分: PBS (without Mg²⁺ and Ca²⁺), pH 7.3 containing 50% glycerol, 0.5% BSA and 0.02% sodium azide

研究领域: Signal Transduction

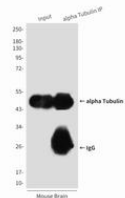
储存和运输: Store at -20°C. Avoid repeated freezing and thawing



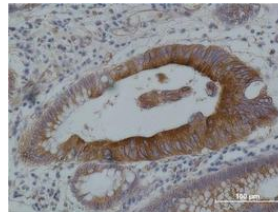
Immunofluorescence analysis of alpha Tubulin (4C9) in HeLa using alpha Tubulin (4C9) antibody (Left), and DAPI (blue).



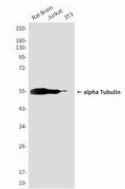
Western blot analysis of alpha Tubulin in MCF-7, 3T3, rat Brain, Jurkat and HeLa lysates using alpha tubulin antibody.



Immunoprecipitation analysis of alpha Tubulin in mouse Brain Tissue lysates using alpha Tubulin antibody.



Immunohistochemistry analysis of paraffin-embedded Human Colon carcinoma using alpha tubulin antibody. High-pressure and temperature Sodium Citrate pH 6.0 was used for antigen retrieval.



Western blot analysis of alpha Tubulin (4C9) in rat brain, Jurkat, 3T3 lysates using alpha Tubulin (4C9) antibody.