

ALPHA SYNUCLEIN RABBIT MAB

货号: N261834

产品全名: alpha Synuclein 兔单克隆抗体

基因符号 SNCA; NACP; PARK1; Alpha-synuclein; Non-A beta component of AD amyloid; Non-A4 component of amyloid precursor; NACP

UNIPROT ID: P37840

背景: May be involved in the regulation of dopamine release and transport. Induces fibrillization of microtubule-associated protein tau. Reduces neuronal responsiveness to various apoptotic stimuli, leading to a decreased caspase-3 activation. Genetic alterations of SNCA resulting in aberrant polymerization into fibrils, are associated with several neurodegenerative diseases (synucleinopathies).

抗原: Recombinant protein of human Alpha-synuclein

经过测试的应用: WB,IHC-P,IP

推荐稀释比: WB: 1/500-1/1000 IHC: 1/50-1/100 IP: 1/20

种属反应性: Rabbit

克隆性: Rabbit Monoclonal

克隆编号: R01-4E1

分子量: Calculated MW: 14 kDa; Observed MW: 18 kDa

亚型: IgG

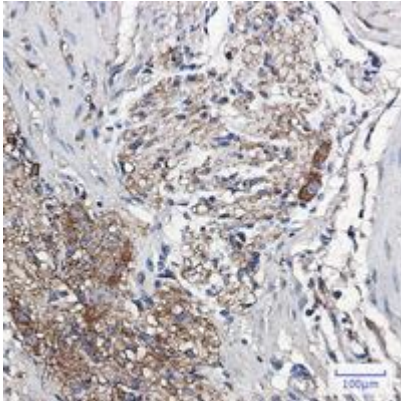
纯化: Affinity Purified

种属反应性: Human,Rat

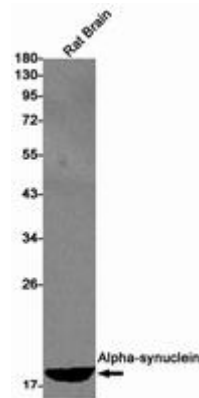
成分: PBS (without Mg²⁺ and Ca²⁺), pH 7.3 containing 50% glycerol, 0.5% BSA and 0.02% sodium azide

研究领域: Neuroscience&Parkinson's disease

储存和运输: Store at -20°C. Avoid repeated freezing and thawing



Immunohistochemistry analysis of paraffin-embedded Human colon cancer using Alphasynuclein antibody. High-pressure and temperature Sodium Citrate pH 6.0 was used for antigen retrieval.



Western blot analysis of Alphasynuclein in rat Brain lysates using alpha Synuclein antibody.