

## ALPHA SMOOTH MUSCLE ACTIN RABBIT MAB

货号: N261830

产品全名: alpha Smooth Muscle Actin 兔单克隆抗体

基因符号 ACTA2; ACTSA; ACTVS; GIG46; Actin; aortic smooth muscle;  
Alpha-actin-2; Cell growth-inhibiting gene 46 protein;  $\alpha$ -SMA

**UNIPROT ID:** P62736

**背景:** Involved in the interaction of plaque proteins and intermediate filaments mediating cell-cell adhesion. Defects in ACTA2 are the cause of aortic aneurysm familial thoracic type 6 (AAT6) [MIM:611788]. They are primarily associated with a characteristic histologic appearance known as 'medial necrosis' or 'Erdheim cystic medial necrosis' in which there is degeneration and fragmentation of elastic fibers, loss of smooth muscle cells, and an accumulation of basophilic ground substance.

**抗原:** A synthetic peptide of human alpha smooth muscle Actin

**经过测试的应用:** WB,IHC-P

**推荐稀释比:** WB: 1/500-1/1000 IHC: 1/50-1/100

**种属反应性:** Rabbit

**克隆性:** Rabbit Monoclonal

**克隆编号:** R01-8C7

**分子量:** Calculated MW: 42 kDa; Observed MW: 42 kDa

**亚型:** IgG

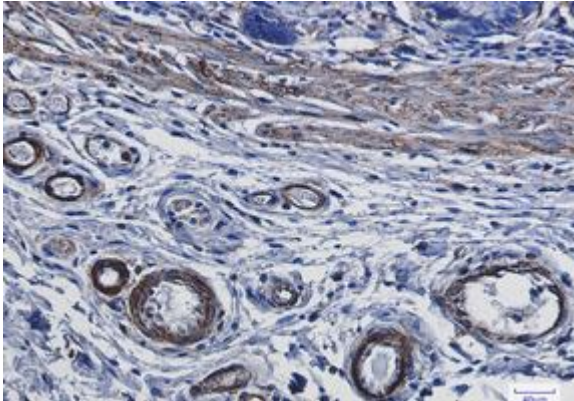
**纯化:** Affinity Purified

**种属反应性:** Human, Mouse and Rat

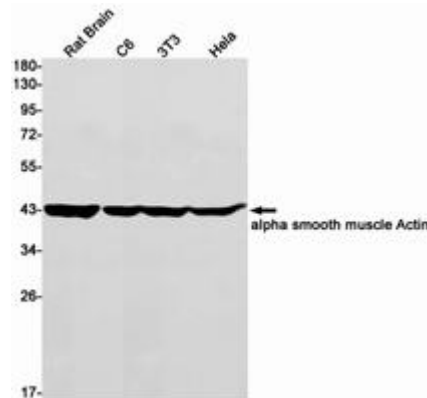
**成分:** PBS (without Mg<sup>2+</sup> and Ca<sup>2+</sup>), pH 7.3 containing 50% glycerol, 0.5% BSA and 0.02% sodium azide

**研究领域:** Signal Transduction

**储存和运输:** Store at -20°C. Avoid repeated freezing and thawing



Immunohistochemistry analysis of paraffin-embedded Human colon cancer using alpha smooth muscle Actin antibody. High-pressure and temperature Sodium Citrate pH 6.0 was used for antigen retrieval.



Western blot analysis of alpha smooth muscle Actin in rat Brain, C6, 3T3, Hela lysates using alpha Smooth Muscle Actin antibody.