

## ALPHA SKELETAL MUSCLE ACTIN RABBIT MAB

货号: N262554

产品全名: alpha Skeletal Muscle Actin 兔单克隆抗体

基因符号 ACTA1; ACTA; Actin; alpha skeletal muscle; Alpha-actin-1

**UNIPROT ID:** P68133

背景: Actins are highly conserved proteins that are involved in various types of cell motility and are ubiquitously expressed in all eukaryotic cells.

抗原: A synthetic peptide of human muscle Actin

经过测试的应用: WB,IHC-F,IHC-P,ICC/IF,IP

推荐稀释比: WB: 1/500-1/1000 IHC: 1/50-1/100 IF: 1/50-1/200 IP: 1/20

种属反应性: Rabbit

克隆性: Rabbit Monoclonal

克隆编号: R03-512

分子量: Calculated MW: 42 kDa; Observed MW: 42 kDa

亚型: IgG

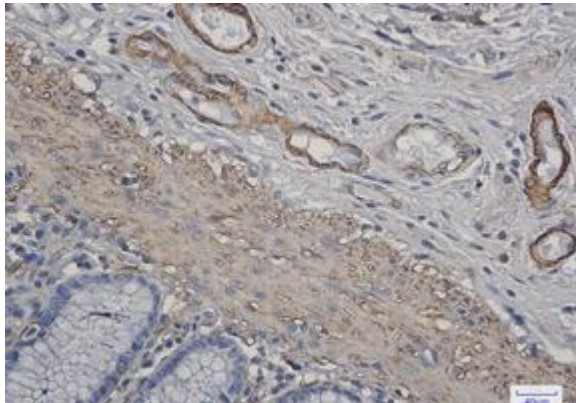
纯化: Affinity Purified

种属反应性: Human,Rat

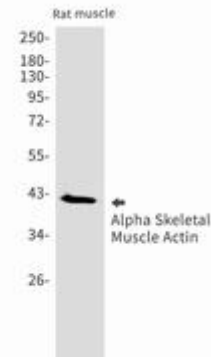
成分: PBS (without Mg<sup>2+</sup> and Ca<sup>2+</sup>), pH 7.3 containing 50% glycerol, 0.5% BSA and 0.02% sodium azide

研究领域: Signal Transduction

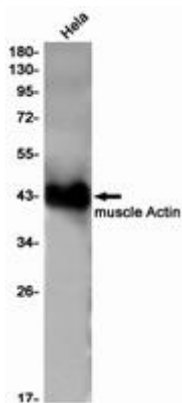
储存和运输: Store at -20°C. Avoid repeated freezing and thawing



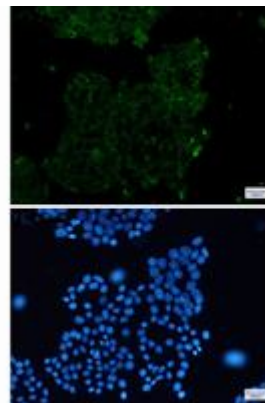
Immunohistochemistry analysis of paraffin-embedded Human colon cancer using muscle Actin antibody. High-pressure and temperature Sodium Citrate pH 6.0 was used for antigen retrieval.



Western blot analysis of Alpha Skeletal Muscle in rat muscle lysates using alpha Skeletal Muscle Actin antibody.



Western blot analysis of muscle Actin in Hela lysates using muscle Actin antibody.



Immunocytochemistry analysis of muscle Actin (green) in Hela using muscle Actin antibody, and DAPI (blue).