

ALPHA SKELETAL MUSCLE ACTIN RABBIT MAB

货号: N261792

产品全名: alpha Skeletal Muscle Actin 兔单克隆抗体

基因符号 ACTA1; ACTA; Actin; alpha skeletal muscle; Alpha-actin-1

UNIPROT ID: P68133

背景: Actins are highly conserved proteins that are involved in various types of cell motility and are ubiquitously expressed in all eukaryotic cells.

抗原: A synthetic peptide of human Actin

经过测试的应用: WB,IP

推荐稀释比: WB: 1/500-1/1000 IP: 1/20

种属反应性: Rabbit

克隆性: Rabbit Monoclonal

克隆编号: R03-5D1

分子量: Calculated MW: 42 kDa; Observed MW: 42 kDa

亚型: IgG

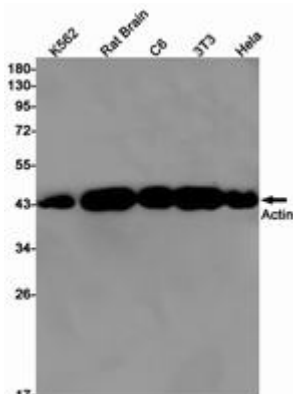
纯化: Affinity Purified

种属反应性: Human, Mouse and Rat

成分: PBS (without Mg²⁺ and Ca²⁺), pH 7.3 containing 50% glycerol, 0.5% BSA and 0.02% sodium azide

研究领域: Signal Transduction

储存和运输: Store at -20°C. Avoid repeated freezing and thawing



Western blot analysis of Actin in K562, rat Brain, C6, 3T3, HeLa lysates using alpha Skeletal Muscle Actin antibody.