

ALPHA SKELETAL MUSCLE ACTIN (2B10) MOUSE MAB

货号: N261251

产品全名: alpha Skeletal Muscle Actin (2B10) 小鼠单抗

基因符号 ACTA1; ACTA; Actin; alpha skeletal muscle; Alpha-actin-1

UNIPROT ID: P68133

背景: Actins are highly conserved proteins that are involved in various types of cell motility and are ubiquitously expressed in all eukaryotic cells.

抗原: Synthetic Peptide of α skeletal muscle actin

经过测试的应用: WB,IHC-F,IHC-P,ICC/IF,IP

推荐稀释比: WB: 1/500-1/1000 IHC: 1/50-1/100 IF: 1/50-1/200 IP: 1/20

种属反应性: Mouse

克隆性: Mouse Monoclonal

克隆编号: 2B10-5B7-1F7

分子量: Calculated MW: 42 kDa; Observed MW: 42 kDa

亚型: IgG

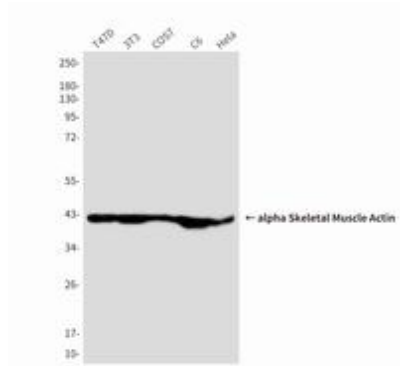
纯化: Affinity Purified

种属反应性: Human, Mouse and Rat

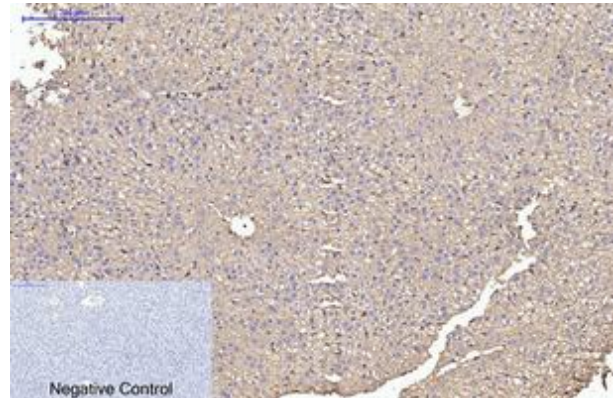
成分: PBS (without Mg²⁺ and Ca²⁺), pH 7.3 containing 50% glycerol, 0.5% BSA and 0.02% sodium azide

研究领域: Signal Transduction

储存和运输: Store at -20°C. Avoid repeated freezing and thawing



Western blot analysis of alpha Skeletal Muscle Actin (2B10) in T47D, 3T3, COS7, C6 and Hela lysates using alpha Skeletal Muscle Actin (2B10) antibody



Immunohistochemistry analysis of paraffin-embedded rat liver tissue using alpha Skeletal Muscle Actin (2B10) antibody. High-pressure and temperature Sodium Citrate pH 6.0 was used for antigen retrieval. Negative control was used by secondary antibody only.