

## ALPHA LACTALBUMIN (10B3) MOUSE MAB

**Cat.#:** N261230

**Product Name:** Anti-alpha Lactalbumin (10B3) Mouse Monoclonal Antibody

**Synonyms:** Lactose synthase B protein; Alpha-lactalbumin; Lactalbumin alpha; MGC138521

**UNIPROT ID:** P00709

**Background:** Regulatory subunit of lactose synthase, changes the substrate specificity of galactosyltransferase in the mammary gland making glucose a good acceptor substrate for this enzyme. This enables LS to synthesize lactose, the major carbohydrate component of milk. In other tissues, galactosyltransferase transfers galactose onto the N-acetylglucosamine of the oligosaccharide chains in glycoproteins.

**Immunogen:** Synthetic Peptide of alpha Lactalbumin

**Applications:** WB,IHC-P,ICC/IF

**Recommended Dilutions:** WB: 1/500-1/1000 IHC: 1/50-1/100 IF: 1/50-1/200

**Host Species:** Mouse

**Clonality:** Mouse Monoclonal

**Clone ID:** 10B3-6A7-7A8

**MW:** Calculated MW: 16 kDa; Observed MW: 16 kDa

**Isotype:** IgG1

**Purification:** Affinity Purified

**Species Reactivity:** Human

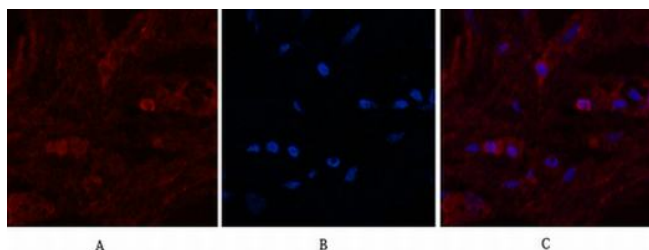
**Conjugation:** Unconjugated

**Modification:** Unmodified

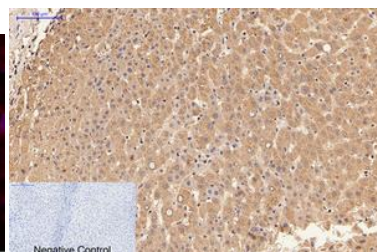
**Constituents:** PBS (without Mg<sup>2+</sup> and Ca<sup>2+</sup>), pH 7.3 containing 50% glycerol, 0.5% BSA and 0.02% sodium azide

**Research Areas:** Tags & Cell Markers

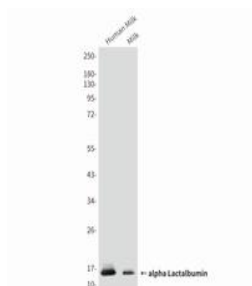
**Storage & Shipping:** Store at -20°C. Avoid repeated freezing and thawing



Immunofluorescence analysis of alpha Lactalbumin (10B3) in Human breast tissue using alpha Lactalbumin antibody (red), and DAPI (blue).



Immunohistochemistry analysis of paraffin-embedded Human liver tissue using alpha Lactalbumin (10B3) antibody. High-pressure and temperature Sodium Citrate pH 6.0 was used for antigen retrieval. Negative control was used by secondary antibody only.



Western blot analysis of alpha Lactalbumin (10B3) in Human Milk, Milk, lysates using alpha Lactalbumin (10B3) antibody