

## ALPHA INTERNEXIN RABBIT PAB

货号: N225957

产品全名: alpha Internexin 兔多抗

基因符号 INA; NEF5; Alpha-internexin; Alpha-Inx; 66 kDa neurofilament protein; NF-66; Neurofilament-66; Neurofilament 5

**UNIPROT ID:** Q16352

**背景:** Class-IV neuronal intermediate filament that is able to self-assemble. It is involved in the morphogenesis of neurons. It may form an independent structural network without the involvement of other neurofilaments or it may cooperate with NF-L to form the filamentous backbone to which NF-M and NF-H attach to form the cross-bridges.

**抗原:** A synthesized peptide derived from human alpha Internexin

**经过测试的应用:** WB,IHC-P,ICC/IF,IP,FC

**推荐稀释比:** WB: 1/500-1/1000 IHC: 1/50-1/100 IF: 1/50-1/200 IP: 1/20 FC: 1/50-1/100

**种属反应性:** Rabbit

**克隆性:** Rabbit Polyclonal

**分子量:** Calculated MW: 55 kDa; Observed MW: 60 kDa

**亚型:** IgG

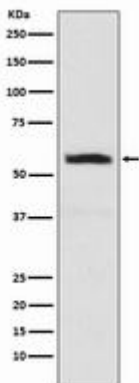
**纯化:** Affinity Chromatography

**种属反应性:** Human, Mouse and Rat

**成分:** PBS (without Mg<sup>2+</sup> and Ca<sup>2+</sup>), pH 7.3 containing 50% glycerol, 0.5% BSA and 0.02% sodium azide

**研究领域:** Cell Biology

**储存和运输:** Store at -20°C. Avoid repeated freezing and thawing



Western blot analysis of alpha Internexin in SH-SY5Y lysates using alpha Internexin antibody.



# Product Description

Pioneering GTPase and Oncogene Product Development since 2010

---