

## ALPHA INTERNEXIN RABBIT MAB

货号: N263216

产品全名: alpha Internexin 兔单克隆抗体

基因符号 INA; NEF5; Alpha-internexin; Alpha-Inx; 66 kDa neurofilament protein; NF-66; Neurofilament-66; Neurofilament 5

**UNIPROT ID:** Q16352

**背景:** Class-IV neuronal intermediate filament that is able to self-assemble. It is involved in the morphogenesis of neurons. It may form an independent structural network without the involvement of other neurofilaments or it may cooperate with NF-L to form the filamentous backbone to which NF-M and NF-H attach to form the cross-bridges.

**抗原:** A synthetic peptide of human alpha Internexin

**经过测试的应用:** WB,IHC-F,IHC-P,ICC/IF,IP

**推荐稀释比:** WB: 1/500-1/1000 IHC: 1/50-1/100 IF: 1/50-1/200 IP: 1/20

**种属反应性:** Rabbit

**克隆性:** Rabbit Monoclonal

**克隆编号:** R01-5F0

**分子量:** Calculated MW: 55 kDa; Observed MW: 55 kDa

**亚型:** IgG

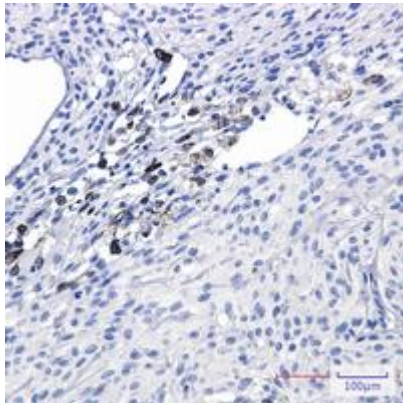
**纯化:** Affinity Purified

**种属反应性:** Human, Mouse and Rat

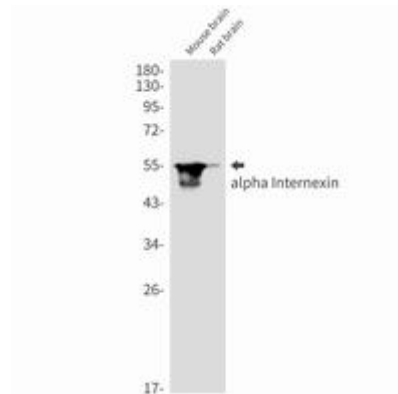
**成分:** PBS (without Mg<sup>2+</sup> and Ca<sup>2+</sup>), pH 7.3 containing 50% glycerol, 0.5% BSA and 0.02% sodium azide

**研究领域:** Neuroscience&Mature Neurons

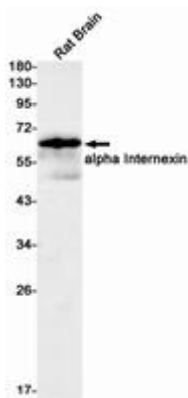
**储存和运输:** Store at -20°C. Avoid repeated freezing and thawing



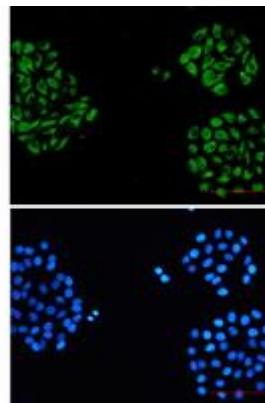
Immunohistochemistry analysis of paraffin-embedded Human Brain using alpha Internexin antibody. High-pressure and temperature Sodium Citrate pH 6.0 was used for antigen retrieval.



Western blot analysis of alpha Internexin in mouse brain, rat brain lysates using alpha Internexin antibody.



Western blot analysis of alpha Internexin in rat Brain lysates using alpha Internexin antibody.



Immunocytochemistry analysis of alpha Internexin (green) in hela using alpha Internexin antibody, and DAPI (blue).