

ALPHA B CRYSTALLIN RABBIT MAB

货号: N261827

产品全名: alpha B Crystallin 兔单克隆抗体

基因符号 CRYAB; CRYA2; Alpha-crystallin B chain; Alpha(B)-crystallin;
Heat shock protein beta-5; HspB5; Renal carcinoma antigen NY-REN-27;
Rosenthal fiber component

UNIPROT ID: P02511

背景: May contribute to the transparency and refractive index of the lens.

抗原: A synthetic peptide of human Alpha B Crystallin

经过测试的应用: WB,ICC/IF,IP

推荐稀释比: WB: 1/500-1/1000 IF: 1/50-1/200 IP: 1/20

种属反应性: Rabbit

克隆性: Rabbit Monoclonal

克隆编号: R02-7A2

分子量: Calculated MW: 20 kDa; Observed MW: 20 kDa

亚型: IgG

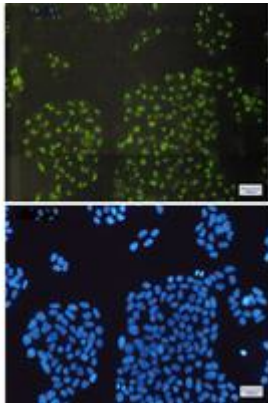
纯化: Affinity Purified

种属反应性: Human,Rat

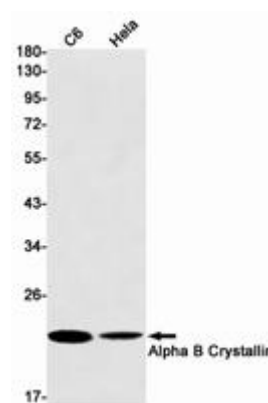
成分: PBS (without Mg²⁺ and Ca²⁺), pH 7.3 containing 50% glycerol, 0.5% BSA and 0.02% sodium azide

研究领域: Signal Transduction

储存和运输: Store at -20°C. Avoid repeated freezing and thawing



Immunocytochemistry analysis of Alpha B Crystallin (green) in Hela using Alpha B Crystallin antibody, and DAPI (blue)



Western blot analysis of Alpha B Crystallin in C6, Hela lysates using alpha B Crystallin antibody.