

ALPHA 1 FETOPROTEIN RABBIT PAB

货号: N225028

产品全名: alpha 1 Fetoprotein 兔多抗

基因符号 Alpha-fetoprotein; Alpha-1-fetoprotein; Alpha-fetoglobulin

UNIPROT ID: P02771

背景: Alpha-fetoprotein (AFP) is a 65 kDa glycoprotein found in the mammalian fetal liver, yolk sac, and GI tract. In normal adult cells, p53 binds to the repressor region of the AFP gene, thereby blocking transcription. Mutations in both p53 and β -catenin are associated with aberrant expression of AFP. Research studies have shown that elevated serum AFP levels are predictive of hepatocellular carcinoma .

抗原: The antiserum was produced against synthesized peptide derived from the Internal region of human AFP. AA range:371-420

经过测试的应用: WB,IHC-P,ELISA

推荐稀释比: WB: 1/500-1/1000 IHC: 1/50-1/100 ELISA: 1/10000

种属反应性: Rabbit

克隆性: Rabbit Polyclonal

分子量: Calculated MW: 69 kDa; Observed MW: 69 kDa

亚型: IgG

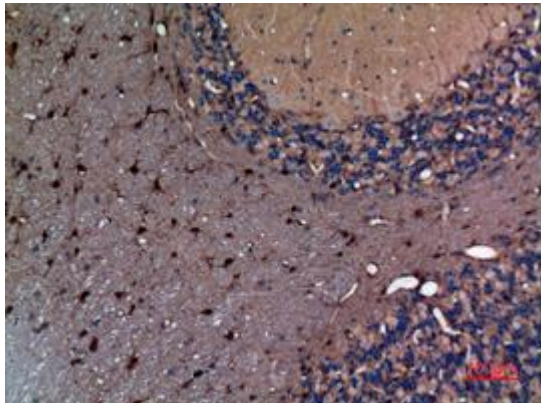
纯化: Affinity Purified

种属反应性: Human

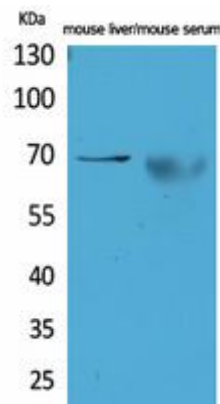
成分: PBS (without Mg²⁺ and Ca²⁺), pH 7.3 containing 50% glycerol, 0.5% BSA and 0.02% sodium azide

研究领域: Cancer

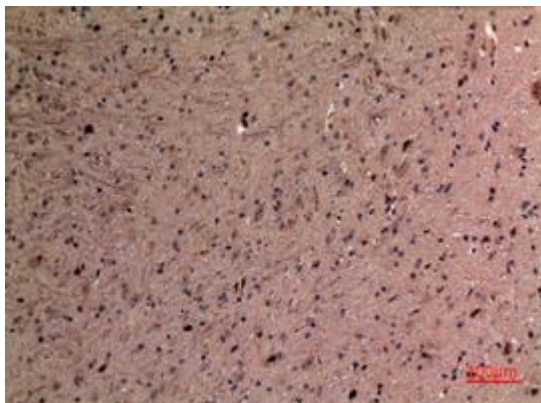
储存和运输: Store at -20°C. Avoid repeated freezing and thawing



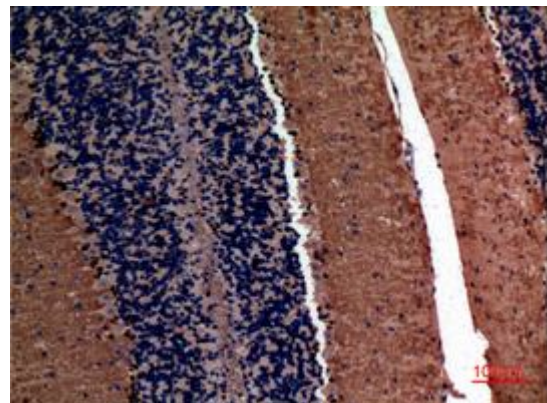
Immunohistochemistry analysis of paraffin-embedded rat brain using alpha 1 Fetoprotein antibody. High-pressure and temperature Sodium Citrate pH 6.0 was used for antigen retrieval.



Western blot analysis of alpha 1 Fetoprotein in mouse liver, mouse serum lysates using alpha 1 Fetoprotein antibody.



Immunohistochemistry analysis of paraffin-embedded mouse brain using alpha 1 Fetoprotein antibody. High-pressure and temperature Sodium Citrate pH 6.0 was used for antigen retrieval.



Immunohistochemistry analysis of paraffin-embedded mouse brain using alpha 1 Fetoprotein antibody. High-pressure and temperature Sodium Citrate pH 6.0 was used for antigen retrieval.