

ALPHA 1-ANTITRYPSIN RABBIT MAB

货号: N263215

产品全名: alpha 1-Antitrypsin 兔单克隆抗体

基因符号 SERPINA1; AAT; PI; Alpha-1-antitrypsin; Alpha-1 protease inhibitor; Alpha-1-antiproteinase; Serpin A1

UNIPROT ID: P01009

背景: SERPINA1 is secreted and is a serine protease inhibitor which its targets include elastase, plasmin, collagenase, thrombin, leucocytic proteases, trypsin, chymotrypsin, and plasminogen activator. Inhibitor of serine proteases. Its primary target is elastase, but it also has a moderate affinity for plasmin and thrombin.

抗原: A synthetic peptide of human alpha 1 Antitrypsin

经过测试的应用: WB,IP

推荐稀释比: WB: 1/500-1/1000 IP: 1/20

种属反应性: Rabbit

克隆性: Rabbit Monoclonal

克隆编号: R01-1G6

分子量: Calculated MW: 47 kDa; Observed MW: 55 kDa

亚型: IgG

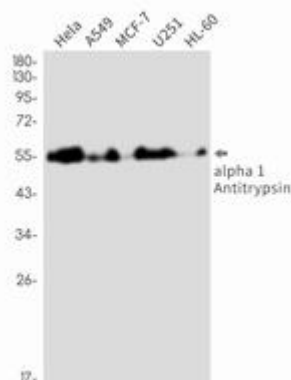
纯化: Affinity Purified

种属反应性: Human

成分: PBS (without Mg²⁺ and Ca²⁺), pH 7.3 containing 50% glycerol, 0.5% BSA and 0.02% sodium azide

研究领域: Cell Biology

储存和运输: Store at -20°C. Avoid repeated freezing and thawing



Western blot analysis of alpha 1 Antitrypsin in HeLa, A549, MCF-7, U251, HL-60 lysates using alpha 1-Antitrypsin antibody.



Product Description

Pioneering GTPase and Oncogene Product Development since 2010
