

ALKALINE PHOSPHATASE RABBIT PAB

货号: N225614

产品全名: Alkaline Phosphatase 兔多抗

基因符号 ALPL; Alkaline phosphatase; tissue-nonspecific isozyme; AP-TNAP; TNSALP; Alkaline phosphatase liver/bone/kidney isozyme

UNIPROT ID: P05186

背景: There are at least four distinct but related alkaline phosphatases: intestinal, placental, placental-like, and liver/bone/kidney (tissue non-specific). The first three are located together on chromosome 2, while the tissue non-specific form is located on chromosome 1. The product of this gene is a membrane bound glycosylated enzyme that is not expressed in any particular tissue and is, therefore, referred to as the tissue-nonspecific form of the enzyme.

抗原: A synthesized peptide derived from human Alkaline Phosphatase

经过测试的应用: WB,IHC-P,ICC/IF,IP,FC

推荐稀释比: WB: 1/500-1/1000 IHC: 1/50-1/100 IF: 1/50-1/200 IP: 1/20 FC: 1/50-1/100

种属反应性: Rabbit

克隆性: Rabbit Polyclonal

分子量: Calculated MW: 57 kDa; Observed MW: 75 kDa

亚型: IgG

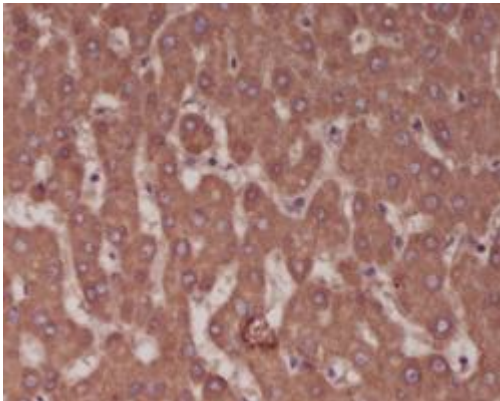
纯化: Affinity Chromatography

种属反应性: Human, Mouse and Rat

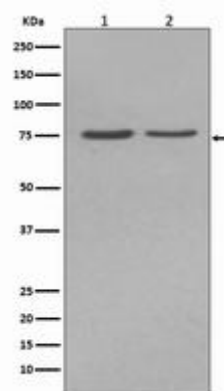
成分: PBS (without Mg²⁺ and Ca²⁺), pH 7.3 containing 50% glycerol, 0.5% BSA and 0.02% sodium azide

研究领域: Tags & Cell Markers

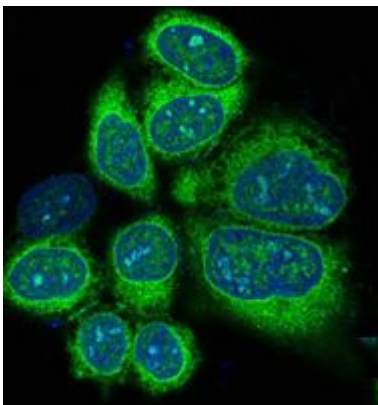
储存和运输: Store at -20°C. Avoid repeated freezing and thawing



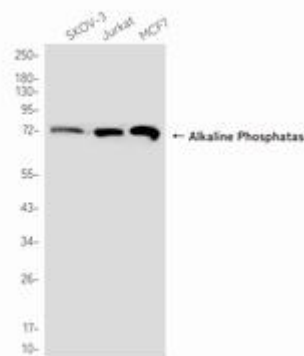
Immunohistochemistry analysis of paraffin-embedded Human liver using Alkaline Phosphatase antibody. High-pressure and temperature Sodium Citrate pH 6.0 was used for antigen retrieval.



Western blot analysis of Alkaline Phosphatase in (1) HepG2 lysates; (2) JAR lysates using Alkaline Phosphatase antibody.



Immunofluorescence analysis of Alkaline Phosphatase in HeLa using Alkaline Phosphatase antibody.



Western blot analysis of Alkaline Phosphatase in SKOV-3, Jurkat and MCF-7 lysates using Alkaline Phosphatase antibody.