

ALG12 RABBIT PAB

货号: S216976

产品全名: ALG12 兔多抗

基因符号: CDG1G; ECM39; hALG12; PP14673

UNIPROT ID: Q9BV10 (Gene Accession - BC001729)

背景: This gene encodes a member of the glycosyltransferase 22 family. The encoded protein catalyzes the addition of the eighth mannose residue in an alpha-1,6 linkage onto the dolichol-PP-oligosaccharide precursor (dolichol-PP-Man(7)GlcNAc(2)) required for protein glycosylation. Mutations in this gene have been associated with congenital disorder of glycosylation type Ig (CDG-Ig) characterized by abnormal N-glycosylation.

抗原: Fusion protein of human ALG12

经过测试的应用: ELISA, IHC

推荐稀释比: IHC: 25-100; ELISA: 2000-5000

种属反应性: Rabbit

克隆性: Rabbit Polyclonal

亚型: Immunogen-specific rabbit IgG

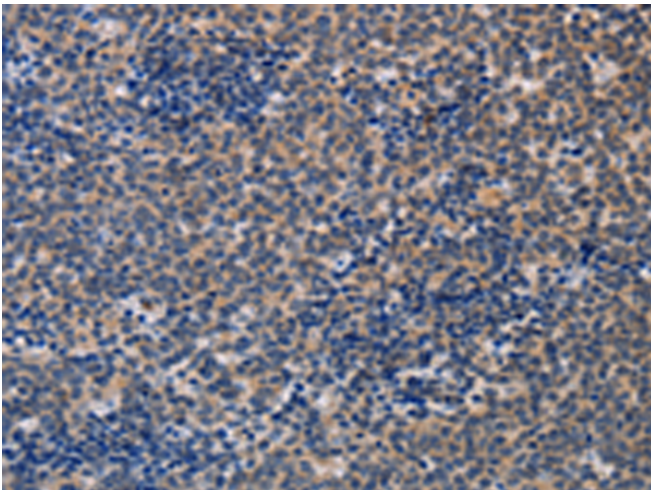
纯化: Antigen affinity purification

种属反应性: Human, Mouse

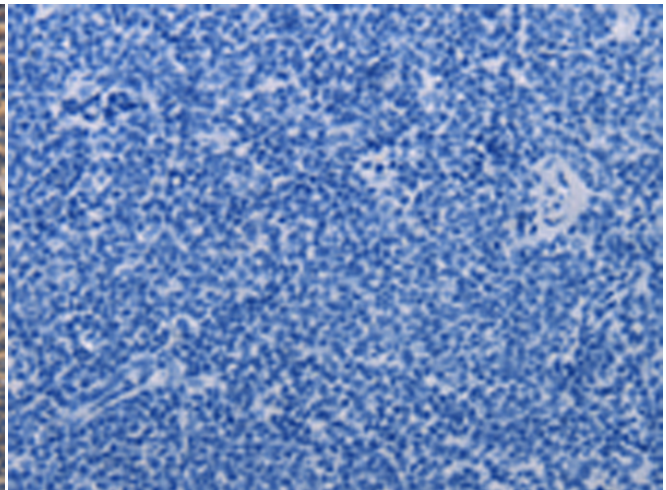
成分: PBS (without Mg²⁺ and Ca²⁺), pH 7.4, 150 mM NaCl, 0.05% Sodium Azide and 40% glycerol

研究领域: Metabolism, Signal Transduction

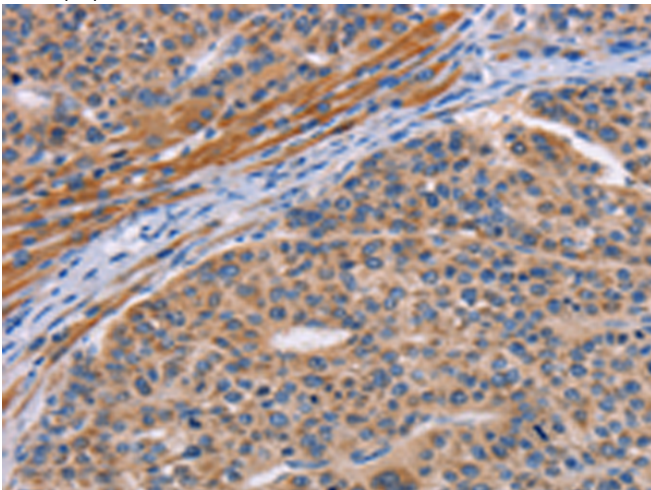
储存和运输: Store at -20°C. Avoid repeated freezing and thawing



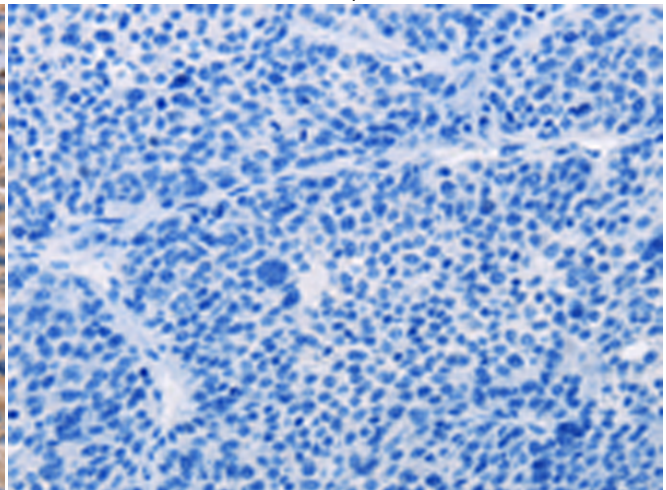
Immunohistochemistry analysis of paraffin embedded Human lymphoma tissue using 216976(ALG12 Antibody) at a dilution of 1/20(Cytoplasm).



In comparison with the IHC on the left, the same paraffin-embedded Human lymphoma tissue is first treated with the fusion protein and then with 216976(Anti-ALG12 Antibody) at dilution 1/20.



The image on the left is immunohistochemistry of paraffin-embedded Human liver cancer tissue using 216976(Anti-ALG12 Antibody) at a dilution of 1/20.



In comparison with the IHC on the left, the same paraffin-embedded Human liver cancer tissue is first treated with fusion protein and then with D221574(Anti-ALG12 Antibody) at dilution 1/20.



Product Description

Pioneering GTPase and Oncogene Product Development since 2010
