

ALDOA RABBIT PAB

货号: S216321

产品全名: ALDOA 兔多抗

基因符号: ALDA; GSD12; HEL-S-87p

UNIPROT ID: P04075 (Gene Accession - BC004333)

背景: This gene encodes a member of the class I fructose-bisphosphate aldolase protein family. The encoded protein is a glycolytic enzyme that catalyzes the reversible conversion of fructose-1,6-bisphosphate to glyceraldehyde 3-phosphate and dihydroxyacetone phosphate. Three aldolase isozymes (A, B, and C), encoded by three different genes, are differentially expressed during development. Mutations in this gene have been associated with Glycogen Storage Disease XII, an autosomal recessive disorder associated with hemolytic anemia. Disruption of this gene also plays a role in the progression of multiple types of cancers. Related pseudogenes have been identified on chromosomes 3 and 10.

抗原: Fusion protein of human ALDOA

经过测试的应用: ELISA, WB, IHC

推荐稀释比: IHC: 50-200;WB: 1000-5000;ELISA: 5000-10000

种属反应性: Rabbit

克隆性: Rabbit Polyclonal

亚型: Immunogen-specific rabbit IgG

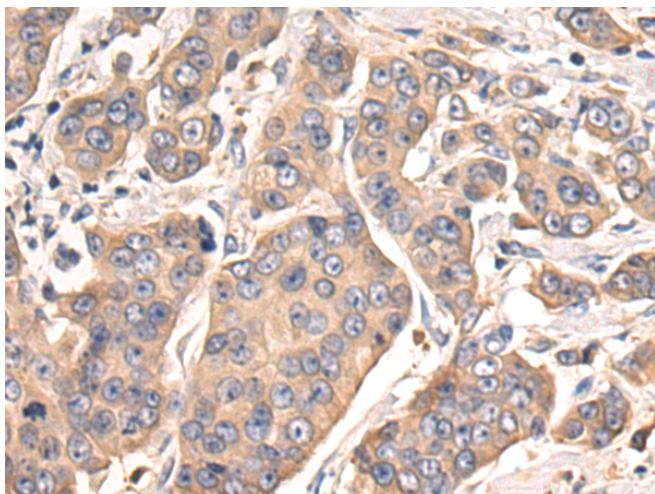
纯化: Antigen affinity purification

种属反应性: Human, Mouse, Rat

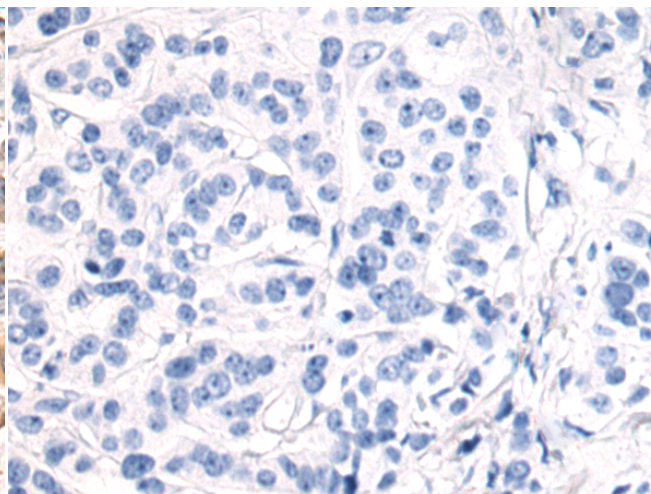
成分: PBS (without Mg²⁺ and Ca²⁺), pH 7.4, 150 mM NaCl, 0.05% Sodium Azide and 40% glycerol

研究领域: Metabolism, Cancer

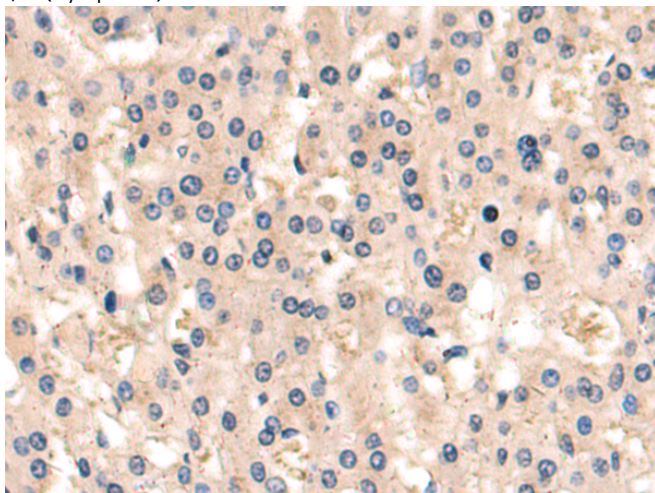
储存和运输: Store at -20°C. Avoid repeated freezing and thawing



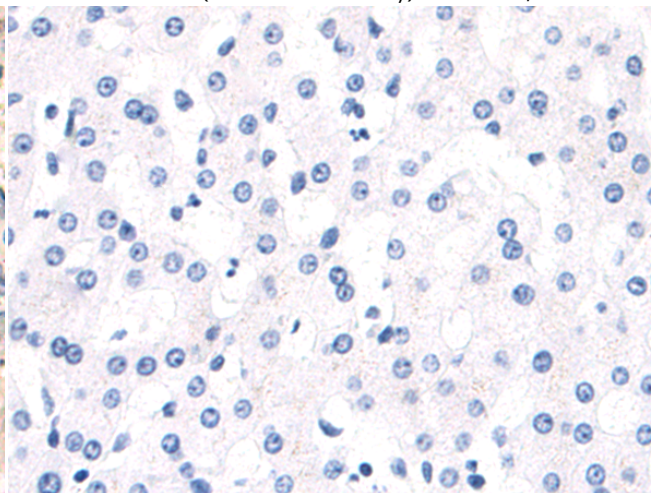
Immunohistochemistry analysis of paraffin embedded Human breast cancer tissue using 216321(ALDOA Antibody) at a dilution of 1/55(Cytoplasm).



In comparison with the IHC on the left, the same paraffin-embedded Human breast cancer tissue is first treated with the fusion protein and then with 216321(Anti-ALDOA Antibody) at dilution 1/55.

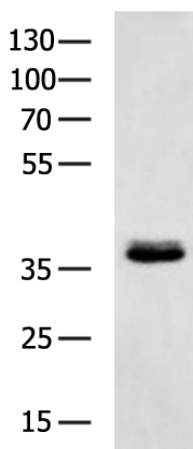


The image on the left is immunohistochemistry of paraffin-embedded Human liver cancer tissue using 216321(Anti-ALDOA Antibody) at a dilution of 1/55.



In comparison with the IHC on the left, the same paraffin-embedded Human liver cancer tissue is first treated with fusion protein and then with D220203(Anti-ALDOA Antibody) at dilution 1/55.

kDa



Gel: 8%SDS-PAGE, Lysate:40 µg;
 Lane: Mouse brain tissue lysates;
 Primary antibody: 216321(ALDOA Antibody) at dilution 1/800;
 Secondary antibody: HRP-conjugated Goat anti rabbit IgG at 1/5000 dilution;
 Exposure time: 2 seconds



Product Description

Pioneering GTPase and Oncogene Product Development since 2010
