

ALDOA RABBIT MAB

货号: N261816

产品全名: ALDOA 兔单克隆抗体

基因符号 ALDOA; ALDA; Fructose-bisphosphate aldolase A; Lung cancer antigen NY-LU-1; Muscle-type aldolase

UNIPROT ID: P04075

背景: Plays a key role in glycolysis and gluconeogenesis. In addition, may also function as scaffolding protein.

抗原: A synthetic peptide of human Aldolase

经过测试的应用: WB,IHC-F,IHC-P,ICC/IF

推荐稀释比: WB: 1/500-1/1000 IHC: 1/50-1/100 IF: 1/50-1/200

种属反应性: Rabbit

克隆性: Rabbit Monoclonal

克隆编号: R06-6A3

分子量: Calculated MW: 39 kDa; Observed MW: 39 kDa

亚型: IgG

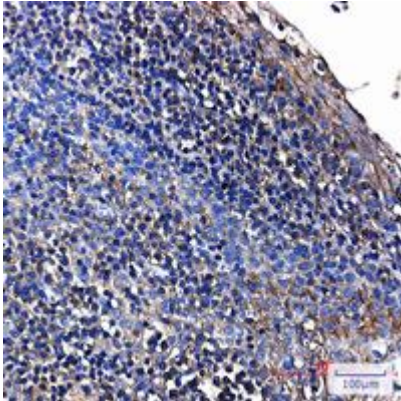
纯化: Affinity Purified

种属反应性: Human, Mouse and Rat

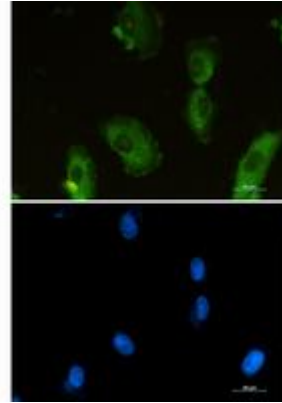
成分: PBS (without Mg²⁺ and Ca²⁺), pH 7.3 containing 50% glycerol, 0.5% BSA and 0.02% sodium azide

研究领域: Signal Transduction

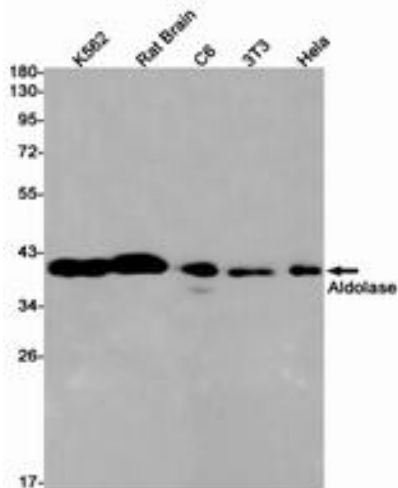
储存和运输: Store at -20°C. Avoid repeated freezing and thawing



Immunohistochemistry analysis of paraffin-embedded Human tonsil tissue using Aldolase antibody. High-pressure and temperature Sodium Citrate pH 6.0 was used for antigen retrieval.



Immunocytochemistry analysis of ALDOA (green) in U87-MG using ALDOA antibody, and DAPI (blue).



Western blot analysis of Aldolase in K562, rat Brain, C6, 3T3, HeLa lysates using Aldolase antibody.