

## ALDH7A1 RABBIT MAB

货号: N261815

产品全名: ALDH7A1 兔单克隆抗体

基因符号 aldehyde dehydrogenase 7 family member A1; EPD; PDE; ATQ1

**UNIPROT ID:** P49419

背景: Multifunctional enzyme mediating important protective effects. Metabolizes betaine aldehyde to betaine, an important cellular osmolyte and methyl donor. Protects cells from oxidative stress by metabolizing a number of lipid peroxidation-derived aldehydes. Involved in lysine catabolism.

抗原: A synthetic peptide of human ALDH7A1

经过测试的应用: WB, ICC/IF, IP

推荐稀释比: WB: 1/500-1/1000 IF: 1/50-1/200 IP: 1/20

种属反应性: Rabbit

克隆性: Rabbit Monoclonal

克隆编号: R01-9D6

分子量: Calculated MW: 58 kDa; Observed MW: 58 kDa

亚型: IgG

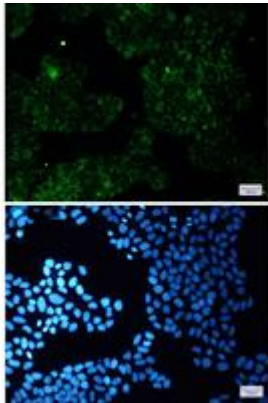
纯化: Affinity Purified

种属反应性: Human, Mouse

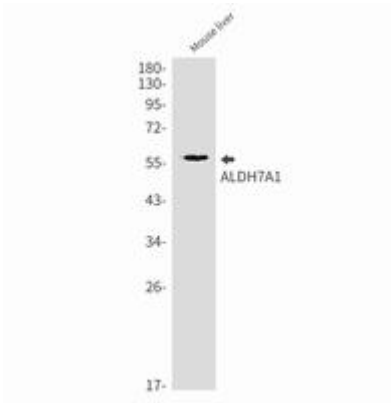
成分: PBS (without Mg<sup>2+</sup> and Ca<sup>2+</sup>), pH 7.3 containing 50% glycerol, 0.5% BSA and 0.02% sodium azide

研究领域: Signal Transduction

储存和运输: Store at -20°C. Avoid repeated freezing and thawing



Immunocytochemistry analysis of ALDH7A1 (green) in HeLa using ALDH7A1 antibody, and DAPI (blue)



Western blot analysis of ALDH7A1 in mouse liver lysates using ALDH7A1 antibody.



Western blot analysis of ALDH7A1 in HeLa lysates using ALDH7A1 antibody.