

ALDH6A1 RABBIT PAB

货号: S216974

产品全名: ALDH6A1 兔多抗

基因符号: MMSDH; MMSADHA

UNIPROT ID: Q02252 (Gene Accession - BC004909)

背景: This protein belongs to the aldehyde dehydrogenases family of proteins. This enzyme plays a role in the valine and pyrimidine catabolic pathways. The product of this gene, a mitochondrial methylmalonate semialdehyde dehydrogenase, catalyzes the irreversible oxidative decarboxylation of malonate and methylmalonate semialdehydes to acetyl- and propionyl-CoA. Methylmalonate semialdehyde dehydrogenase deficiency is characterized by elevated beta-alanine, 3-hydroxypropionic acid, and both isomers of 3-amino and 3-hydroxyisobutyric acids in urine organic acids.

抗原: Fusion protein of human ALDH6A1

经过测试的应用: ELISA, WB, IHC

推荐稀释比: IHC: 50-200;WB: 200-1000;ELISA: 2000-5000

种属反应性: Rabbit

克隆性: Rabbit Polyclonal

亚型: Immunogen-specific rabbit IgG

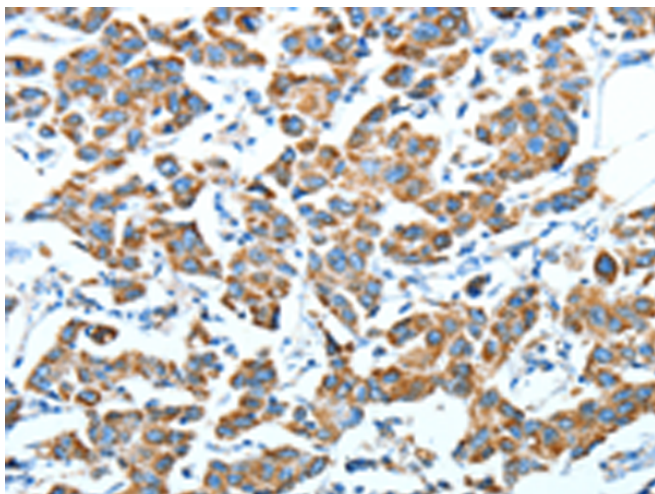
纯化: Antigen affinity purification

种属反应性: Human, Mouse, Rat

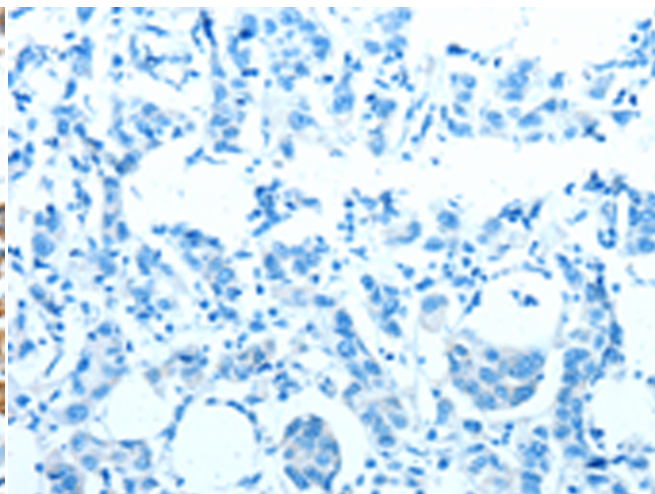
成分: PBS (without Mg²⁺ and Ca²⁺), pH 7.4, 150 mM NaCl, 0.05% Sodium Azide and 40% glycerol

研究领域: Metabolism

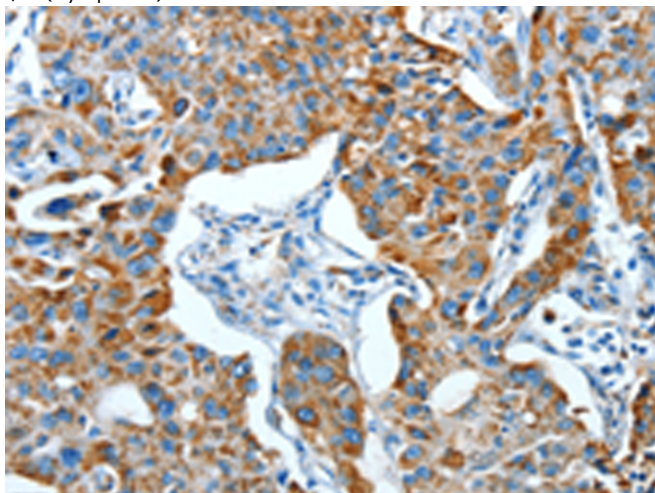
储存和运输: Store at -20°C. Avoid repeated freezing and thawing



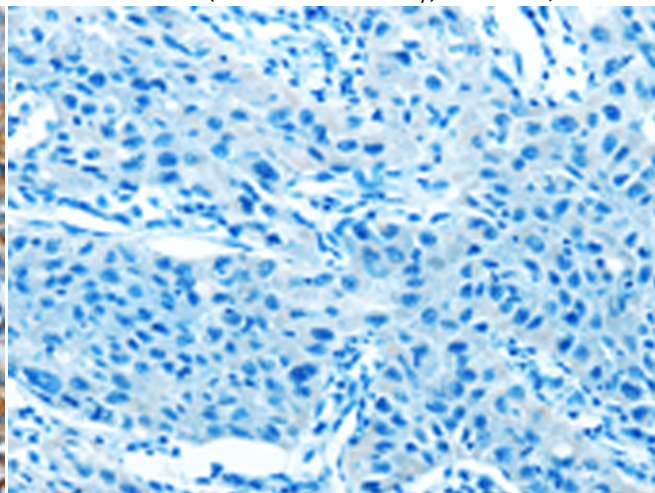
Immunohistochemistry analysis of paraffin embedded Human breast cancer tissue using 216974(ALDH6A1 Antibody) at a dilution of 1/45(Cytoplasm).



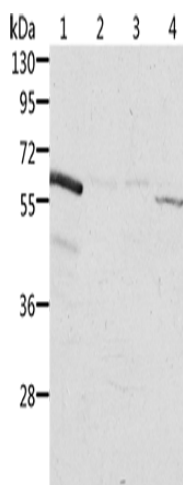
In comparison with the IHC on the left, the same paraffin-embedded Human breast cancer tissue is first treated with the fusion protein and then with 216974(Anti-ALDH6A1 Antibody) at dilution 1/45.



The image on the left is immunohistochemistry of paraffin-embedded Human lung cancer tissue using 216974(Anti-ALDH6A1 Antibody) at a dilution of 1/45.



In comparison with the IHC on the left, the same paraffin-embedded Human lung cancer tissue is first treated with fusion protein and then with D221570(Anti-ALDH6A1 Antibody) at dilution 1/45.



Gel: 10%SDS-PAGE, Lysate: 40 µg;
 Lane 1-4: Rat kidney tissue, human fetal kidney tissue, Jurkat cells, K562 cells;
 Primary antibody: 216974(ALDH6A1 Antibody) at dilution 1/450;
 Secondary antibody: Goat anti rabbit IgG at 1/8000 dilution;
 Exposure time: 20 seconds



Product Description

Pioneering GTPase and Oncogene Product Development since 2010
