

## ALDH3A2 RABBIT PAB

货号: S217982

产品全名: ALDH3A2 兔多抗

基因符号: SLS; FALDH; ALDH10

**UNIPROT ID:** P51648 (Gene Accession - BC002430 )

**背景:** Aldehyde dehydrogenase isozymes are thought to play a major role in the detoxification of aldehydes generated by alcohol metabolism and lipid peroxidation. This gene product catalyzes the oxidation of long-chain aliphatic aldehydes to fatty acid. Mutations in the gene cause Sjogren-Larsson syndrome. Alternatively spliced transcript variants encoding different isoforms have been found for this gene.

**抗原:** Fusion protein of human ALDH3A2

**经过测试的应用:** ELISA, WB, IHC

**推荐稀释比:** IHC: 50-200;WB: 1000-5000;ELISA: 5000-10000

**种属反应性:** Rabbit

**克隆性:** Rabbit Polyclonal

**亚型:** Immunogen-specific rabbit IgG

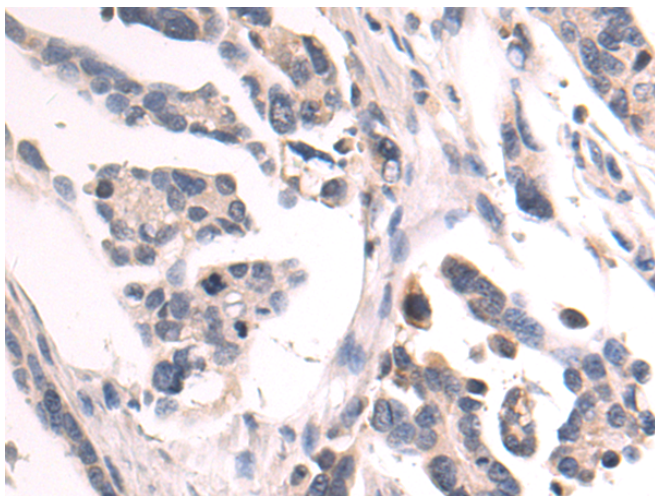
**纯化:** Antigen affinity purification

**种属反应性:** Human, Rat

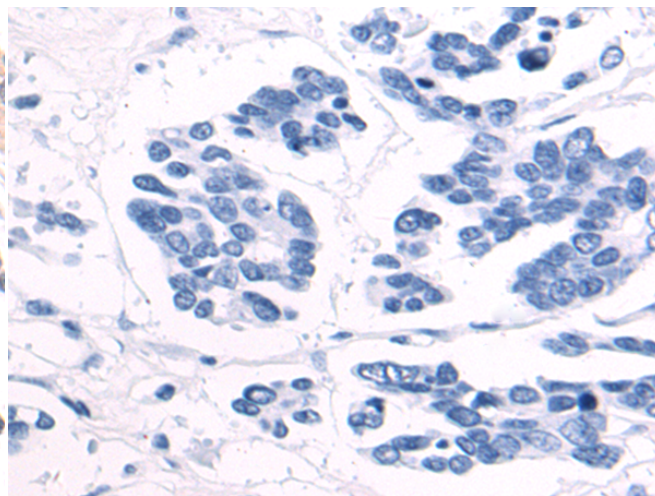
**成分:** PBS (without Mg<sup>2+</sup> and Ca<sup>2+</sup>), pH 7.4, 150 mM NaCl, 0.05% Sodium Azide and 40% glycerol

**研究领域:** Metabolism

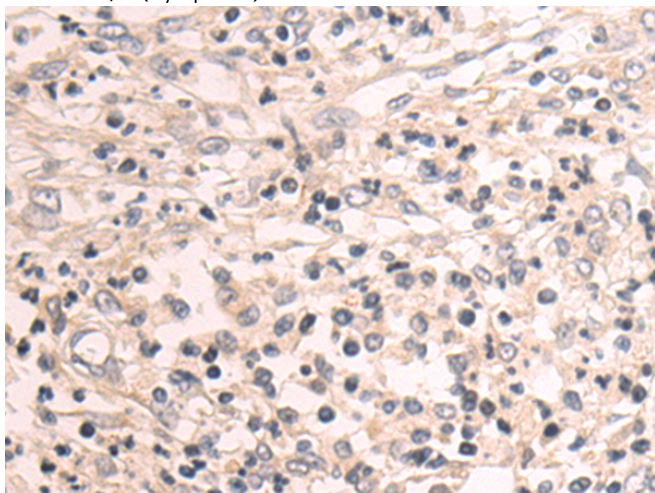
**储存和运输:** Store at -20°C. Avoid repeated freezing and thawing



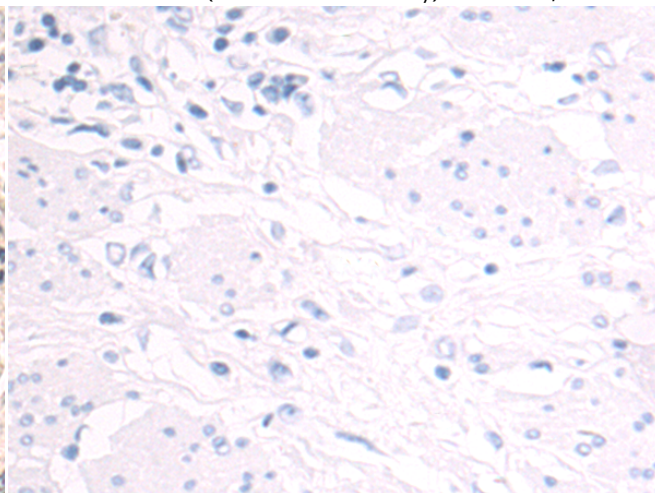
Immunohistochemistry analysis of paraffin embedded Human colorectal cancer tissue using 217982(ALDH3A2 Antibody) at a dilution of 1/70(Cytoplasm).



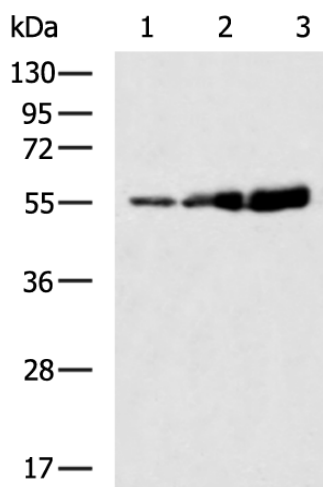
In comparison with the IHC on the left, the same paraffin-embedded Human colorectal cancer tissue is first treated with the fusion protein and then with 217982(Anti-ALDH3A2 Antibody) at dilution 1/70.



The image on the left is immunohistochemistry of paraffin-embedded Human esophagus cancer tissue using 217982(Anti-ALDH3A2 Antibody) at a dilution of 1/70.



In comparison with the IHC on the left, the same paraffin-embedded Human esophagus cancer tissue is first treated with fusion protein and then with D223491(Anti-ALDH3A2 Antibody) at dilution 1/70.



Gel: 8%SDS-PAGE, Lysate: 40 µg;  
 Lane 1-3: Rat liver tissue, HepG2 cell, A549 cell lysates;  
 Primary antibody: 217982(ALDH3A2 Antibody) at dilution 1/1000;  
 Secondary antibody: HRP-conjugated Goat anti rabbit IgG at 1/5000 dilution;  
 Exposure time: 10 seconds



# Product Description

Pioneering GTPase and Oncogene Product Development since 2010

---