

## ALDH1A1/ALDH1A2/ALDH1A3 RABBIT PAB

货号: S216241

产品全名: ALDH1A1/ALDH1A2/ALDH1A3 兔多抗

基因符号 ALDC, ALDH1, PUM1, ALDH11, RALDH1, ALDH-E1; RALDH2, RALDH2-T, RALDH(II); ALDH6, RALDH3, ALDH1A6

UNIPROT ID: P00352/O94788/P47895 (Gene Accession - BC001505/BC030589/BC069274 )

背景: This protein belongs to the aldehyde dehydrogenase family of proteins. The product of this gene is an enzyme that catalyzes the synthesis of retinoic acid (RA) from retinaldehyde. Retinoic acid, the active derivative of vitamin A (retinol), is a hormonal signaling molecule that functions in developing and adult tissues. The studies of a similar mouse gene suggest that this enzyme and the cytochrome CYP26A1, concurrently establish local embryonic retinoic acid levels which facilitate posterior organ development and prevent spina bifida. Four transcript variants encoding distinct isoforms have been identified for this gene.

抗原: Fusion protein of human ALDH1A1/ALDH1A2/ALDH1A3

经过测试的应用: ELISA, WB, IHC

推荐稀释比: IHC: 50-150;WB: 500-2000;ELISA: 1000-5000

种属反应性: Rabbit

克隆性: Rabbit Polyclonal

亚型: Immunogen-specific rabbit IgG

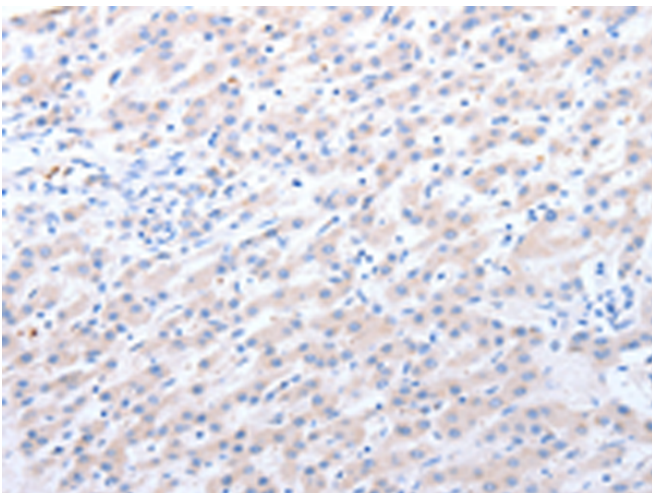
纯化: Antigen affinity purification

种属反应性: Human, Mouse

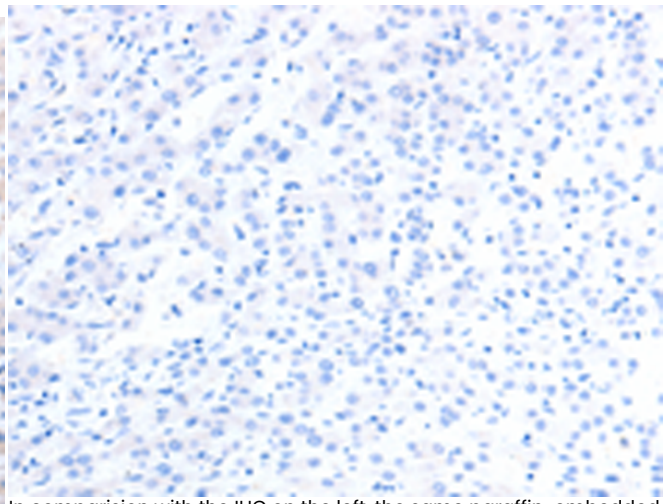
成分: PBS (without Mg<sup>2+</sup> and Ca<sup>2+</sup>), pH 7.4, 150 mM NaCl, 0.05% Sodium Azide and 40% glycerol

研究领域: Cancer, Neuroscience, Stem Cells

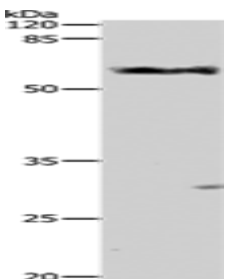
储存和运输: Store at -20°C. Avoid repeated freezing and thawing



Immunohistochemistry analysis of paraffin embedded Human liver cancer tissue using 216241(ALDH1A1/ALDH1A2/ALDH1A3 Antibody) at a dilution of 1/40(Cytoplasm).



In comparison with the IHC on the left, the same paraffin-embedded Human liver cancer tissue is first treated with the fusion protein and then with 216241(Anti-ALDH1A1/ALDH1A2/ALDH1A3 Antibody) at dilution 1/40.



Gel: 10%SDS-PAGE, Lysate: 30 µg;

Lane: Mouse liver tissue;

Primary antibody: 216241(ALDH1A1/ALDH1A2/ALDH1A3 Antibody) at dilution 1/400;

Secondary antibody: Goat anti rabbit IgG at 1/8000 dilution;

Exposure time: 30 seconds



# Product Description

Pioneering GTPase and Oncogene Product Development since 2010

---