

ALAS2 RABBIT MAB

货号: N261812

产品全名: ALAS2 兔单克隆抗体

基因符号 ASB; ANHI; XLSA; ALASE; XLDPP; XLEPP; ALAS-E; SIDBA1

UNIPROT ID: P22557

背景: Miscellaneous There are two delta-ALA synthases in vertebrates: an erythroid-specific form and one (housekeeping) which is expressed in all tissues.

抗原: A synthetic peptide of human ALAS2

经过测试的应用: WB,IP

推荐稀释比: WB: 1/500-1/1000 IP: 1/20

种属反应性: Rabbit

克隆性: Rabbit Monoclonal

克隆编号: R06-3A3

分子量: Calculated MW: 65 kDa; Observed MW: 65 kDa

亚型: IgG

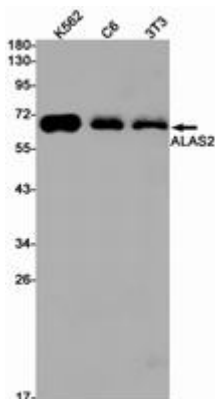
纯化: Affinity Purified

种属反应性: Human, Mouse and Rat

成分: PBS (without Mg²⁺ and Ca²⁺), pH 7.3 containing 50% glycerol, 0.5% BSA and 0.02% sodium azide

研究领域: Cardiovascular

储存和运输: Store at -20°C. Avoid repeated freezing and thawing



Western blot analysis of ALAS2 in K562, C6, 3T3 lysates using ALAS2 antibody.