

## AKT1S1 RABBIT PAB

货号: S211444

产品全名: AKT1S1 兔多抗

基因符号: Lobe; PRAS40

**UNIPROT ID:** Q96B36 (Gene Accession - BC015562 )

**背景:** AKT1S1 is a proline-rich substrate of AKT (MIM 164730) that binds I4-3-3 protein (see YWHAH, MIM 113508) when phosphorylated (Kovacina et al., 2003 [PubMed 12524439]).

**抗原:** Fusion protein of human AKT1S1

**经过测试的应用:** ELISA, IHC

**推荐稀释比:** IHC: 150-300; ELISA: 5000-10000

**种属反应性:** Rabbit

**克隆性:** Rabbit Polyclonal

**亚型:** Immunogen-specific rabbit IgG

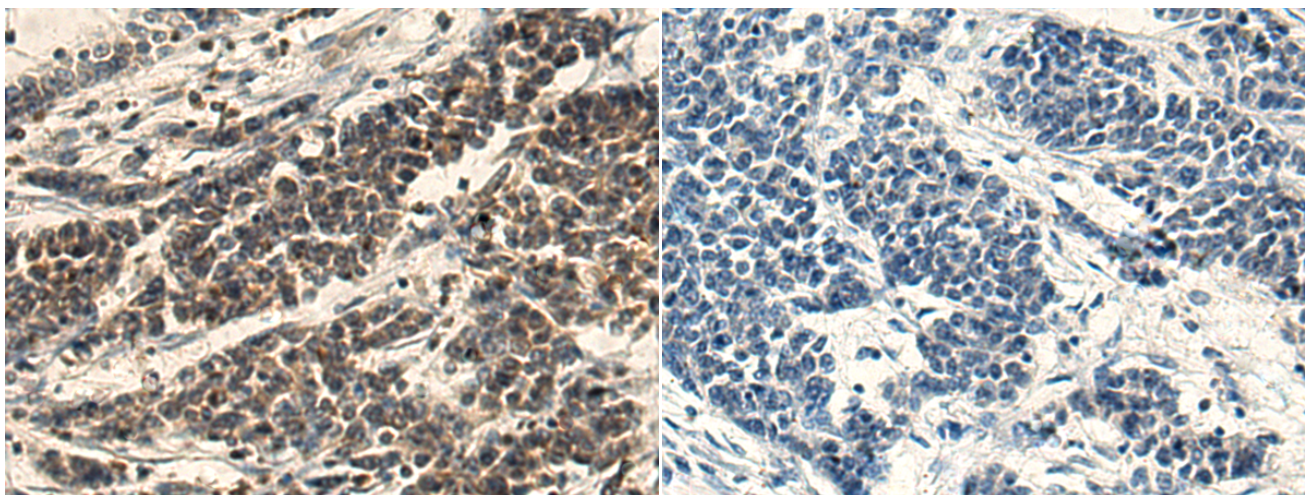
**纯化:** Antigen affinity purification

**种属反应性:** Human, Mouse

**成分:** PBS (without Mg<sup>2+</sup> and Ca<sup>2+</sup>), pH 7.4, 150 mM NaCl, 0.05% Sodium Azide and 40% glycerol

**研究领域:** Signal Transduction, Cancer, Neuroscience

**储存和运输:** Store at -20°C. Avoid repeated freezing and thawing



Immunohistochemistry analysis of paraffin embedded Human colorectal cancer tissue using 211444(AKT1S1 Antibody) at a dilution of 1/150(Cytoplasm).

In comparison with the IHC on the left, the same paraffin-embedded Human colorectal cancer tissue is first treated with the fusion protein and then with 211444(Anti-AKT1S1 Antibody) at dilution 1/150.