

AKR1B1 RABBIT PAB

货号: S220044

产品全名: AKR1B1 兔多抗

基因符号: AR; ADR; ALR2; ALDR1

UNIPROT ID: P15121 (Gene Accession - NP_001619)

背景: This gene encodes a member of the aldo/keto reductase superfamily, which consists of more than 40 known enzymes and proteins. This member catalyzes the reduction of a number of aldehydes, including the aldehyde form of glucose, and is thereby implicated in the development of diabetic complications by catalyzing the reduction of glucose to sorbitol. Multiple pseudogenes have been identified for this gene. The nomenclature system used by the HUGO Gene Nomenclature Committee to define human aldo-keto reductase family members is known to differ from that used by the Mouse Genome Informatics database.

抗原: Synthetic peptide of human AKR1B1

经过测试的应用: ELISA, WB, IHC

推荐稀释比: IHC: 50-200;WB: 500-2000;ELISA: 2000-5000

种属反应性: Rabbit

克隆性: Rabbit Polyclonal

亚型: Immunogen-specific rabbit IgG

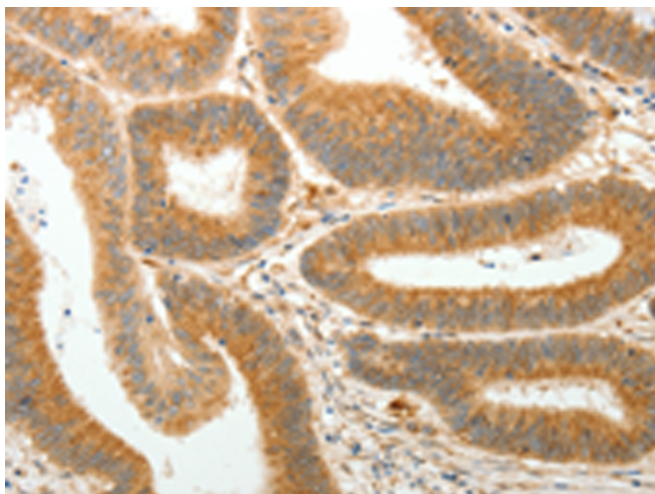
纯化: Antigen affinity purification

种属反应性: Human

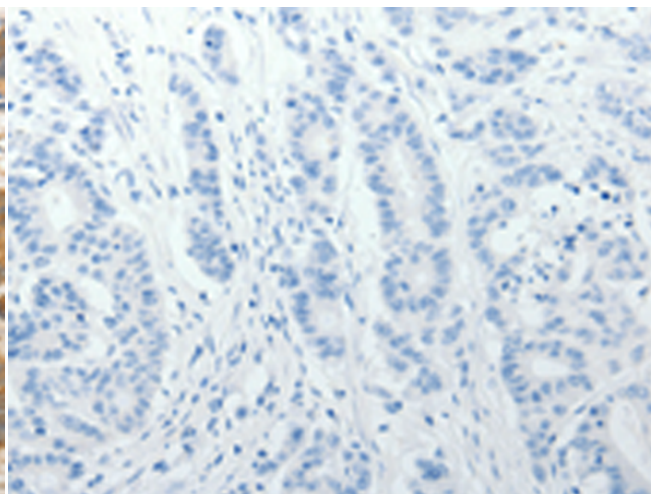
成分: PBS (without Mg²⁺ and Ca²⁺), pH 7.4, 150 mM NaCl, 0.05% Sodium Azide and 40% glycerol

研究领域: Metabolism

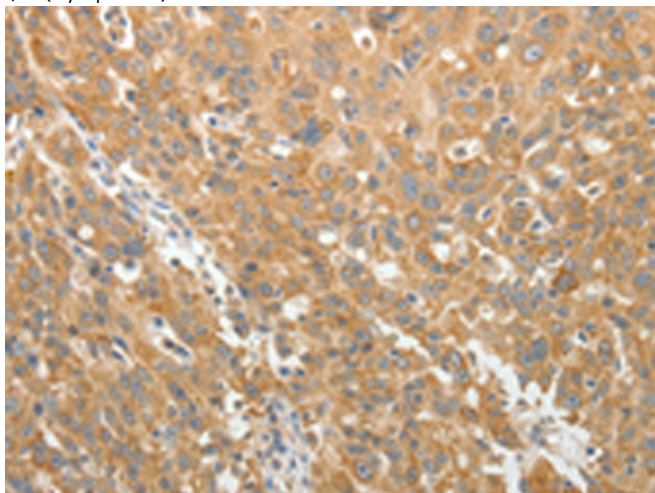
储存和运输: Store at -20°C. Avoid repeated freezing and thawing



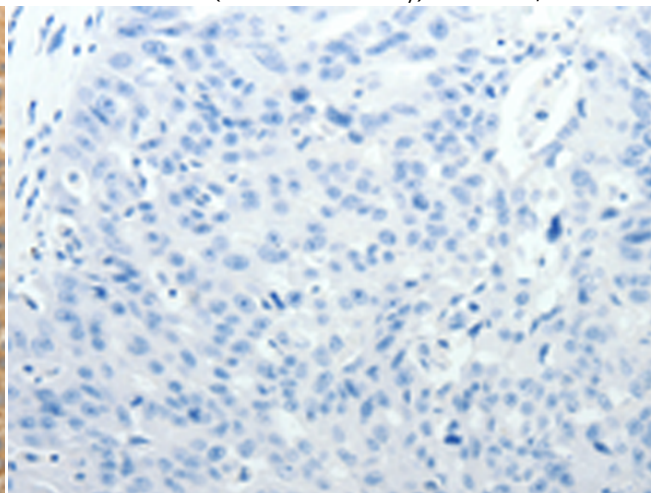
Immunohistochemistry analysis of paraffin embedded Human colon cancer tissue using 220044(AKR1B1 Antibody) at a dilution of 1/30(Cytoplasm).



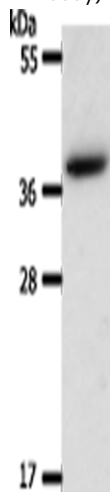
In comparison with the IHC on the left, the same paraffin-embedded Human colon cancer tissue is first treated with the synthetic peptide and then with 220044(Anti-AKR1B1 Antibody) at dilution 1/30.



The image on the left is immunohistochemistry of paraffin-embedded Human ovarian cancer tissue using 220044(Anti-AKR1B1 Antibody) at a dilution of 1/30.



In comparison with the IHC on the left, the same paraffin-embedded Human ovarian cancer tissue is first treated with synthetic peptide and then with D260849(Anti-AKR1B1 Antibody) at dilution 1/30.



Gel: 10%SDS-PAGE, Lysate: 27 µg;
Lane: HeLa cells;
Primary antibody: 220044(AKR1B1 Antibody) at dilution 1/550;
Secondary antibody: Goat anti rabbit IgG at 1/8000 dilution;
Exposure time: 1 second



Product Description

Pioneering GTPase and Oncogene Product Development since 2010
